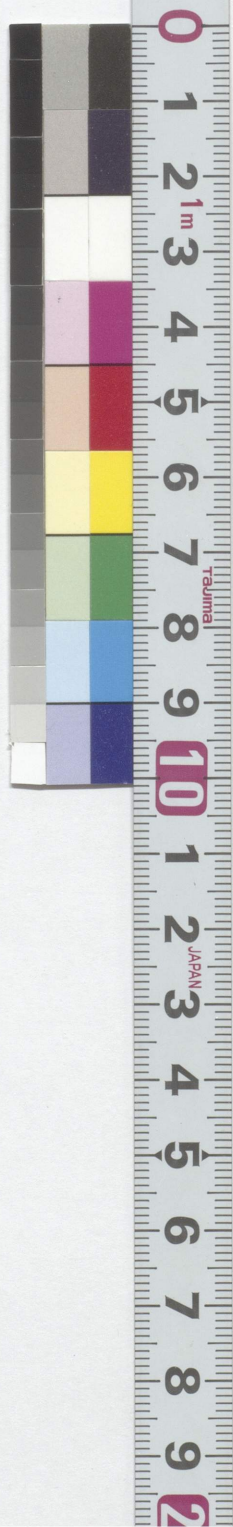


對數表

全





其  
實  
乃  
滿  
漢  
之  
通  
語  
也  
其  
中  
有  
一  
定  
之  
法







眞數	對數	眞數	對數	眞數	對數	眞數	對數 2
No.	Log.	No.	Log.	No.	Log.	No.	Log.
181	.257679	226	.354108	271	.432969	316	.499687
182	.260071	227	.356026	272	.434569	317	.501059
183	.262451	228	.357935	273	.436163	318	.502427
184	.264818	229	.359835	274	.437751	319	.503791
185	.267172	230	.361728	275	.439333	320	.505150
186	.269513	231	.363612	276	.440909	321	.506505
187	.271842	232	.365488	277	.442480	322	.507856
188	.274153	233	.367356	278	.444045	323	.509203
189	.276462	234	.369216	279	.445604	324	.510545
190	.278754	235	.371068	280	.447158	325	.511883
191	.281033	236	.372912	281	.448706	326	.513218
192	.283301	237	.374748	282	.450249	327	.514548
193	.285557	238	.376577	283	.451786	328	.515874
194	.287802	239	.378398	284	.453318	329	.517196
195	.290035	240	.380211	285	.454845	330	.518514
196	.292256	241	.382017	286	.456366	331	.519828
197	.294466	242	.383815	287	.457882	332	.521138
198	.296665	243	.385606	288	.459392	333	.522444
199	.298853	244	.387390	289	.460898	334	.523746
200	.301030	245	.389166	290	.462398	335	.525045
201	.303196	246	.390935	291	.463893	336	.526339
202	.305351	247	.392697	292	.465383	337	.527630
203	.307496	248	.394452	293	.466868	338	.528917
204	.309630	249	.396199	294	.468347	339	.530200
205	.311754	250	.397940	295	.469822	340	.531479
206	.313867	251	.399674	296	.471292	341	.532754
207	.315970	252	.401401	297	.472756	342	.534026
208	.318063	253	.403121	298	.474216	343	.535294
209	.320146	254	.404834	299	.475671	344	.536558
210	.322219	255	.406540	300	.477121	345	.537819
211	.324282	256	.408240	301	.478567	346	.539076
212	.326336	257	.409933	302	.480007	347	.540329
213	.328380	258	.411620	303	.481443	348	.541579
214	.330414	259	.413300	304	.482874	349	.542825
215	.332438	260	.414973	305	.484300	350	.544068
216	.334454	261	.416641	306	.485721	351	.545307
217	.336460	262	.418301	307	.487138	352	.546543
218	.338457	263	.419956	308	.488551	353	.547775
219	.340444	264	.421604	309	.489958	354	.549003
220	.342423	265	.423246	310	.491362	355	.550228
221	.344392	266	.424882	311	.492760	356	.551450
222	.346353	267	.426511	312	.494155	357	.552668
223	.348305	268	.428135	313	.495544	358	.553883
224	.350248	269	.429752	314	.496930	359	.555094
225	.352183	270	.431364	315	.498311	360	.556303

眞數	對數	眞數	對數	眞數	對數	眞數	對數 3
No.	Log.	No.	Log.	No.	Log.	No.	Log.
361	.557507	406	.608526	451	.654177	496	.695482
362	.558709	407	.609594	452	.655138	497	.696356
363	.559907	408	.610660	453	.656098	498	.697229
364	.561101	409	.611723	454	.657056	499	.698101
365	.562293	410	.612784	455	.658011	500	.698970
366	.563481	411	.613842	456	.658965	501	.699838
367	.564666	412	.614897	457	.659916	502	.700704
368	.565848	413	.615950	458	.660865	503	.701568
369	.567026	414	.617000	459	.661813	504	.702431
370	.568202	415	.618048	460	.662758	505	.703291
371	.569374	416	.619093	461	.663701	506	.704151
372	.570543	417	.620136	462	.664642	507	.705008
373	.571709	418	.621176	463	.665581	508	.705864
374	.572872	419	.622214	464	.666518	509	.706718
375	.574031	420	.623249	465	.667453	510	.707570
376	.575188	421	.624282	466	.668386	511	.708421
377	.576341	422	.625312	467	.669317	512	.709270
378	.577492	423	.626340	468	.670246	513	.710117
379	.578639	424	.627366	469	.671173	514	.710963
380	.579784	425	.628389	470	.672098	515	.711807
381	.580925	426	.629410	471	.673021	516	.712650
382	.582063	427	.630428	472	.673942	517	.713491
383	.583199	428	.631444	473	.674861	518	.714330
384	.584331	429	.632457	474	.675778	519	.715167
385	.585461	430	.633468	475	.676694	520	.716003
386	.586587	431	.634477	476	.677607	521	.716838
387	.587711	432	.635484	477	.678518	522	.717671
388	.588832	433	.636488	478	.679428	523	.718502
389	.589950	434	.637490	479	.680336	524	.719331
390	.591065	435	.638489	480	.681241	525	.720159
391	.592177	436	.639486	481	.682145	526	.720986
392	.593286	437	.640481	482	.683047	527	.721811
393	.594393	438	.641474	483	.683947	528	.722634
394	.595496	439	.642465	484	.684845	529	.723456
395	.596597	440	.643453	485	.685742	530	.724276
396	.597695	441	.644439	486	.686636	531	.725095
397	.598791	442	.645422	487	.687529	532	.725912
398	.599883	443	.646404	488	.688420	533	.726727
399	.600973	444	.647383	489	.689309	534	.727541
400	.602060	445	.648360	490	.690196	535	.728354
401	.603144	446	.649335	491	.691081	536	.729165
402	.604226	447	.650308	492	.691965	537	.729974
403	.605305	448	.651278	493	.692847	538	.730782
404	.606381	449	.652246	494	.693727	539	.731589
405	.607455	450	.653213	495	.694605	540	.732394



眞數	對數	眞數	對數	眞數	對數	眞數	對數	4
No.	Log.	No.	Log.	No.	Log.	No.	Log.	
541	.733197	546	.767893	631	.800029	676	.829947	
542	.733999	587	.768638	632	.800717	677	.830589	
543	.734800	588	.769377	633	.801404	678	.831230	
544	.735599	589	.770115	634	.802089	679	.831870	
545	.736397	590	.770852	635	.802774	680	.832509	
546	.737193	591	.771587	636	.803457	681	.833147	
547	.737987	592	.772322	637	.804139	682	.833784	
548	.738781	593	.773055	638	.804821	683	.834421	
549	.739572	594	.773786	639	.805501	684	.835056	
550	.740363	595	.774517	640	.806180	685	.835691	
551	.741152	596	.775246	641	.806858	686	.836324	
552	.741939	597	.775974	642	.807535	687	.836957	
553	.742725	598	.776701	643	.808211	688	.837588	
554	.743510	599	.777427	644	.808886	689	.838219	
555	.744293	600	.778151	645	.809560	690	.838849	
556	.745075	601	.778874	646	.810233	691	.839478	
557	.745855	602	.779596	647	.810904	692	.840106	
558	.746634	603	.780317	648	.811575	693	.840733	
559	.747412	604	.781037	649	.812245	694	.841359	
560	.748188	605	.781755	650	.812913	695	.841985	
561	.748963	606	.782473	651	.813581	696	.842609	
562	.749736	607	.783189	652	.814248	697	.843233	
563	.750508	608	.783904	653	.814913	698	.843855	
564	.751279	609	.784617	654	.815578	699	.844477	
565	.752048	610	.785330	655	.816241	700	.845098	
566	.752816	611	.786041	656	.816904	701	.845718	
567	.753583	612	.786751	657	.817565	702	.846337	
568	.754348	613	.787460	658	.818226	703	.846955	
569	.755112	614	.788168	659	.818885	704	.847573	
570	.755875	615	.788875	660	.819544	705	.848189	
571	.756636	616	.789581	661	.820201	706	.848805	
572	.757396	617	.790285	662	.820858	707	.849419	
573	.758155	618	.790988	663	.821514	708	.850033	
574	.758912	619	.791691	664	.822168	709	.850646	
575	.759668	620	.792392	665	.822822	710	.851258	
576	.760422	621	.793092	666	.823474	711	.851870	
577	.761176	622	.793790	667	.824126	712	.852480	
578	.761928	623	.794488	668	.824776	713	.853090	
579	.762679	624	.795185	669	.825426	714	.853698	
580	.763428	625	.795880	670	.826075	715	.854306	
581	.764176	626	.796574	671	.826723	716	.854913	
582	.764923	627	.797268	672	.827369	717	.855519	
583	.765669	628	.797960	673	.828015	718	.856124	
584	.766413	629	.798651	674	.828660	719	.856729	
585	.767156	630	.799341	675	.829304	720	.857333	

眞數	對數	眞數	對數	眞數	對數	眞數	對數	5
No.	Log.	No.	Log.	No.	Log.	No.	Log.	
721	.857935	766	.884229	811	.909021	856	.932474	
722	.858537	767	.884795	812	.909556	857	.932981	
723	.859138	768	.885361	813	.910091	858	.933487	
724	.859739	769	.885926	814	.910624	859	.933993	
725	.860338	770	.886491	815	.911158	860	.934498	
726	.860937	771	.887054	816	.911690	861	.935003	
727	.861534	772	.887617	817	.912222	862	.935507	
728	.862131	773	.888179	818	.912753	863	.936011	
729	.862728	774	.888741	819	.913284	864	.936514	
730	.863323	775	.889302	820	.913814	865	.937016	
731	.863917	776	.889862	821	.914343	866	.937518	
732	.864511	777	.890421	822	.914872	867	.938019	
733	.865104	778	.890980	823	.915400	868	.938520	
734	.865696	779	.891537	824	.915927	869	.939020	
735	.866287	780	.892095	825	.916454	870	.939519	
736	.866878	781	.892651	826	.916980	871	.940018	
737	.867467	782	.893207	827	.917506	872	.940516	
738	.868056	783	.893762	828	.918030	873	.941014	
739	.868644	784	.894316	829	.918555	874	.941511	
740	.869232	785	.894870	830	.919078	875	.942008	
741	.869818	786	.895423	831	.919601	876	.942504	
742	.870404	787	.895975	832	.920123	877	.943000	
743	.870989	788	.896526	833	.920645	878	.943495	
744	.871573	789	.897077	834	.921166	879	.943989	
745	.872156	790	.897627	835	.921686	880	.944483	
746	.872739	791	.898176	836	.922206	881	.944976	
747	.873321	792	.898725	837	.922725	882	.945469	
748	.873902	793	.899273	838	.923244	883	.945961	
749	.874482	794	.899821	839	.923762	884	.946452	
750	.875061	795	.900367	840	.924279	885	.946943	
751	.875640	796	.900913	841	.924796	886	.947434	
752	.876218	797	.901458	842	.925312	887	.947924	
753	.876795	798	.902003	843	.925828	888	.948413	
754	.877371	799	.902547	844	.926342	889	.948902	
755	.877947	800	.903090	845	.926857	890	.949390	
756	.878522	801	.903633	846	.927370	891	.949878	
757	.879096	802	.904174	847	.927883	892	.950365	
758	.879669	803	.904716	848	.928396	893	.950851	
759	.880242	804	.905256	849	.928908	894	.951338	
760	.880814	805	.905796	850	.929419	895	.951823	
761	.881385	806	.906335	851	.929930	896	.952308	
762	.881955	807	.906874	852	.930440	897	.952792	
763	.882525	808	.907411	853	.930949	898	.953276	
764	.883093	809	.907949	854	.931458	899	.953760	
765	.883661	810	.908485	855	.931966	900	.954243	



眞數	對數	眞數	對數	眞數	對數 6
No.	Log.	No.	Log.	No.	Log.
901	.954725	946	.975891	991	.996074
902	.955207	947	.976350	992	.996512
903	.955688	948	.976808	993	.996949
904	.956168	949	.977266	994	.997386
905	.956649	950	.977724	995	.997823
906	.957128	951	.978181	996	.998259
907	.957607	952	.978637	997	.998695
908	.958086	953	.979093	998	.999131
909	.958564	954	.979548	999	.999565
910	.959041	955	.980003	1000	.000000
911	.959518	956	.980458		
912	.959995	957	.980912		
913	.960471	958	.981366		
914	.960946	959	.981819		
915	.961421	960	.982271		
916	.961895	961	.982723		
917	.962369	962	.983175		
918	.962843	963	.983626		
919	.963316	964	.984077		
920	.963788	965	.984527		
921	.964260	966	.984977		
922	.964731	967	.985426		
923	.965202	968	.985875		
924	.965672	969	.986324		
925	.966142	970	.986772		
926	.966611	971	.987219		
927	.967080	972	.987666		
928	.967548	973	.988113		
929	.968016	974	.988559		
930	.968483	975	.989005		
931	.968950	976	.989450		
932	.969416	977	.989895		
933	.969882	978	.990339		
934	.970347	979	.990783		
935	.970812	980	.991226		
936	.971276	981	.991669		
937	.971740	982	.992111		
938	.972203	983	.992554		
939	.972666	984	.992995		
940	.973128	985	.993436		
941	.973590	986	.993877		
942	.974051	987	.994317		
943	.974512	988	.994757		
944	.974972	989	.995196		
945	.975432	990	.995635		

眞數	對數	差	眞數	對數	差	眞數	對數	差 7
No.	Log.	part.	No.	Log.	part.	No.	Log.	part.
1000	.000000	000	1040	.017033	000	1080	.033424	000
1	.000434	043	1	.017451	042	1	.033826	040
2	.000868	086	2	.017868	083	2	.034227	080
3	.001301	130	3	.018284	125	3	.034628	120
4	.001734	173	4	.018700	166	4	.035029	160
5	.002166	216	5	.019116	208	5	.035430	200
6	.002598	259	6	.019532	250	6	.035830	240
7	.003029	302	7	.019947	291	7	.036229	280
8	.003460	346	8	.020361	333	8	.036629	320
9	.003891	389	9	.020775	374	9	.037028	360
1010	.004321	000	1050	.021189	000	1090	.037426	000
1	.004751	043	1	.021603	041	1	.037825	040
2	.005180	086	2	.022016	082	2	.038223	079
3	.005609	128	3	.022428	124	3	.038620	119
4	.006038	171	4	.022841	165	4	.039017	159
5	.006466	214	5	.023252	206	5	.039414	198
6	.006894	257	6	.023664	247	6	.039811	238
7	.007321	300	7	.024075	288	7	.040207	278
8	.007748	343	8	.024486	330	8	.040602	318
9	.008174	385	9	.024896	371	9	.040998	357
1020	.008600	000	1060	.025306	000	1100	.041393	000
1	.009026	042	1	.025715	041	1	.041787	039
2	.009451	085	2	.026124	082	2	.042182	079
3	.009876	127	3	.026533	122	3	.042575	118
4	.010300	170	4	.026942	163	4	.042969	157
5	.010724	212	5	.027350	204	5	.043362	196
6	.011147	254	6	.027757	245	6	.043755	236
7	.011570	297	7	.028164	286	7	.044148	275
8	.011993	339	8	.028571	326	8	.044540	314
9	.012415	382	9	.028978	367	9	.044931	354
1030	.012837	000	1070	.029384	000	1110	.045323	000
1	.013259	042	1	.029789	040	1	.045714	039
2	.013680	084	2	.030195	081	2	.046105	078
3	.014100	126	3	.030600	121	3	.046495	117
4	.014520	168	4	.031004	162	4	.046885	156
5	.014940	210	5	.031408	202	5	.047275	195
6	.015360	252	6	.031812	242	6	.047664	234
7	.015779	294	7	.032216	283	7	.048053	273
8	.016197	336	8	.032619	323	8	.048442	312
9	.016615	378	9	.033021	364	9	.048830	351



眞數	對數	差	眞數	對數	差	眞數	對數	差 8
No.	Log.	part.	No.	Log.	part.	No.	Log.	part.
1120	.049218	000	1160	.064458	000	1200	.079181	000
1	.049606	039	1	.064832	037	1	.079543	036
2	.049993	077	2	.065206	075	2	.079904	072
3	.050380	116	3	.065580	112	3	.080266	108
4	.050766	154	4	.065953	149	4	.080626	144
5	.051152	193	5	.066326	186	5	.080987	180
6	.051538	232	6	.066699	224	6	.081347	216
7	.051924	270	7	.067071	261	7	.081707	252
8	.052309	309	8	.067443	298	8	.082067	288
9	.052694	347	9	.067814	336	9	.082426	324
1130	.053078	000	1170	.068186	000	1210	.082785	000
1	.053463	038	1	.068557	037	1	.083144	036
2	.053846	077	2	.068928	074	2	.083503	071
3	.054230	115	3	.069298	111	3	.083861	107
4	.054613	153	4	.069668	148	4	.084219	143
5	.054996	191	5	.070038	185	5	.084576	179
6	.055378	230	6	.070407	222	6	.084934	214
7	.055760	268	7	.070776	259	7	.085291	250
8	.056142	306	8	.071145	296	8	.085647	286
9	.056524	345	9	.071514	333	9	.086004	322
1140	.056905	000	1180	.071882	000	1220	.086360	000
1	.057286	038	1	.072250	037	1	.086716	035
2	.057666	076	2	.072617	073	2	.087071	071
3	.058046	114	3	.072985	110	3	.087426	106
4	.058426	152	4	.073352	147	4	.087781	142
5	.058805	190	5	.073718	183	5	.088136	177
6	.059185	228	6	.074085	220	6	.088490	213
7	.059563	266	7	.074451	256	7	.088845	248
8	.059942	304	8	.074816	293	8	.089198	284
9	.060320	342	9	.075182	330	9	.089552	319
1150	.060698	000	1190	.075547	000	1230	.089905	000
1	.061075	038	1	.075912	036	1	.090258	035
2	.061452	075	2	.076276	073	2	.090611	070
3	.061829	113	3	.076640	109	3	.090963	106
4	.062206	150	4	.077004	145	4	.091315	141
5	.062582	188	5	.077368	181	5	.091667	176
6	.062958	226	6	.077731	218	6	.092018	211
7	.063333	263	7	.078094	254	7	.092370	246
8	.063709	301	8	.078457	290	8	.092721	282
9	.064083	338	9	.078819	327	9	.093071	317

眞數	對數	差	眞數	對數	差	眞數	對數	差 9
No.	Log.	part.	No.	Log.	part.	No.	Log.	part.
1240	.093422	000	1280	.107210	000	1320	.120574	000
1	.093772	035	1	.107549	034	1	.120903	033
2	.094122	070	2	.107888	067	2	.121231	066
3	.094471	105	3	.108227	101	3	.121560	098
4	.094820	140	4	.108565	135	4	.121888	131
5	.095169	175	5	.108903	169	5	.122216	164
6	.095518	210	6	.109241	203	6	.122543	197
7	.095866	245	7	.109578	237	7	.122871	230
8	.096215	280	8	.109916	270	8	.123198	262
9	.096562	315	9	.110253	304	9	.123525	295
1250	.096910	000	1290	.110590	000	1330	.123852	000
1	.097257	035	1	.110926	034	1	.124178	033
2	.097604	069	2	.111262	067	2	.124504	065
3	.097951	104	3	.111598	101	3	.124830	098
4	.098297	138	4	.111934	134	4	.125156	130
5	.098644	173	5	.112270	168	5	.125481	163
6	.098990	208	6	.112605	201	6	.125806	195
7	.099335	240	7	.112940	235	7	.126131	228
8	.099681	277	8	.113275	268	8	.126456	260
9	.100026	311	9	.113609	302	9	.126781	293
1260	.100370	000	1300	.113943	000	1340	.127105	000
1	.100715	034	1	.114277	033	1	.127429	032
2	.101059	069	2	.114611	067	2	.127752	065
3	.101403	103	3	.114944	100	3	.128076	097
4	.101747	137	4	.115278	133	4	.128399	129
5	.102090	172	5	.115610	167	5	.128722	161
6	.102434	206	6	.115943	200	6	.129045	194
7	.102777	240	7	.116276	233	7	.129368	226
8	.103119	275	8	.116608	267	8	.129690	258
9	.103462	309	9	.116940	300	9	.130012	291
1270	.103804	000	1310	.117271	000	1350	.130334	000
1	.104146	034	1	.117603	033	1	.130655	032
2	.104487	068	2	.117934	066	2	.130977	064
3	.104828	102	3	.118265	099	3	.131298	096
4	.105169	136	4	.118595	132	4	.131619	128
5	.105510	170	5	.118926	165	5	.131939	160
6	.105851	204	6	.119256	198	6	.132260	192
7	.106191	238	7	.119586	231	7	.132580	224
8	.106531	272	8	.119915	264	8	.132900	256
9	.106870	306	9	.120245	297	9	.133219	288



眞數	對數	差	眞數	對數	差	眞數	對數	差 10
No.	Log.	part.	No.	Log.	part.	No.	Log.	part.
1360	.133539	000	1400	.146128	000	1440	.158362	000
1	.133858	032	1	.146438	031	1	.158664	030
2	.134177	064	2	.146748	062	2	.158965	060
3	.134496	096	3	.147058	093	3	.159266	090
4	.134814	127	4	.147367	124	4	.159567	120
5	.135133	159	5	.147676	155	5	.159868	150
6	.135451	191	6	.147985	186	6	.160168	180
7	.135768	223	7	.148294	217	7	.160468	210
8	.136086	255	8	.148603	248	8	.160769	240
9	.136403	287	9	.148911	279	9	.161068	270
1370	.136721	000	1410	.149219	000	1450	.161368	000
1	.137037	032	1	.149527	031	1	.161667	030
2	.137354	063	2	.149835	061	2	.161967	060
3	.137670	094	3	.150142	092	3	.162266	089
4	.137987	126	4	.150449	123	4	.162564	119
5	.138303	158	5	.150756	154	5	.162863	149
6	.138618	189	6	.151063	184	6	.163161	179
7	.138934	221	7	.151370	215	7	.163460	209
8	.139249	252	8	.151676	246	8	.163757	239
9	.139564	284	9	.151982	277	9	.164055	269
1380	.139879	000	1420	.152288	000	1460	.164353	000
1	.140194	031	1	.152594	030	1	.164650	030
2	.140508	063	2	.152900	061	2	.164947	059
3	.140822	094	3	.153205	091	3	.165244	089
4	.141136	125	4	.153510	122	4	.165541	119
5	.141450	157	5	.153815	152	5	.165838	148
6	.141763	188	6	.154119	183	6	.166134	178
7	.142076	219	7	.154424	213	7	.166430	207
8	.142389	251	8	.154728	244	8	.166726	237
9	.142702	282	9	.155032	274	9	.167022	267
1390	.143015	000	1430	.155336	000	1470	.167317	000
1	.143327	031	1	.155640	030	1	.167613	028
2	.143639	062	2	.155943	060	2	.167908	059
3	.143951	093	3	.156246	091	3	.168203	088
4	.144263	125	4	.156549	121	4	.168497	118
5	.144574	156	5	.156852	151	5	.168792	147
6	.144885	187	6	.157154	181	6	.169086	177
7	.145196	218	7	.157457	211	7	.169380	206
8	.145507	249	8	.157759	242	8	.169674	236
9	.145818	280	9	.158061	272	9	.169968	265

眞數	對數	差	眞數	對數	差	眞數	對數	差 11
No.	Log.	part.	No.	Log.	part.	No.	Log.	part.
1480	.170262	000	1520	.181844	000	1560	.193125	000
1	.170555	029	1	.182129	028	1	.193403	028
2	.170848	058	2	.182415	057	2	.193681	056
3	.171141	088	3	.182700	086	3	.193959	083
4	.171434	117	4	.182985	114	4	.194237	111
5	.171726	146	5	.183270	143	5	.194514	139
6	.172019	175	6	.183554	171	6	.194792	166
7	.172311	204	7	.183839	200	7	.195069	194
8	.172603	234	8	.184123	228	8	.195346	222
9	.172895	263	9	.184407	256	9	.195623	250
1490	.173186	000	1530	.184691	000	1570	.195900	000
1	.173478	029	1	.184975	028	1	.196176	027
2	.173769	058	2	.185259	057	2	.196452	055
3	.174060	087	3	.185542	085	3	.196729	083
4	.174351	116	4	.185825	113	4	.197005	110
5	.174641	145	5	.186108	142	5	.197281	138
6	.174932	175	6	.186391	170	6	.197556	166
7	.175222	204	7	.186674	198	7	.197832	193
8	.175512	233	8	.186956	227	8	.198107	221
9	.175802	261	9	.187239	255	9	.198382	248
1500	.176091	000	1540	.187521	000	1580	.198657	000
1	.176381	029	1	.187803	028	1	.198932	027
2	.176670	058	2	.188084	056	2	.199206	055
3	.176959	086	3	.188366	084	3	.199481	082
4	.177248	115	4	.188647	113	4	.199755	110
5	.177536	144	5	.188928	141	5	.200029	137
6	.177825	173	6	.189209	169	6	.200303	164
7	.178113	202	7	.189490	197	7	.200577	192
8	.178401	231	8	.189771	225	8	.200850	219
9	.178689	259	9	.190051	253	9	.201124	247
1510	.178977	000	1550	.190332	000	1590	.201397	000
1	.179264	029	1	.190612	028	1	.201670	027
2	.179552	057	2	.190892	056	2	.201943	054
3	.179839	086	3	.191171	084	3	.202216	082
4	.180126	115	4	.191451	112	4	.202488	109
5	.180413	144	5	.191730	140	5	.202761	136
6	.180699	172	6	.192010	168	6	.203033	163
7	.180986	201	7	.192289	196	7	.203305	191
8	.181272	230	8	.192567	224	8	.203577	218
9	.181558	258	9	.192846	252	9	.203848	245



眞數	對數	差	眞數	對數	差	眞數	對數	差 <sup>12</sup>
No.	Log.	part.	No.	Log.	part.	No.	Log.	part.
1600	.204120	000	1640	.214844	000	1680	.225309	000
1	.204391	027	1	.215109	026	1	.225568	026
2	.204662	054	2	.215373	053	2	.225826	052
3	.204933	081	3	.215638	079	3	.226084	077
4	.205204	108	4	.215902	106	4	.226342	103
5	.205475	135	5	.216166	132	5	.226600	129
6	.205745	162	6	.216430	158	6	.226858	155
7	.206016	189	7	.216694	185	7	.227115	181
8	.206286	216	8	.216957	211	8	.227372	206
9	.206556	243	9	.217221	238	9	.227630	232
1610	.206826	000	1650	.217484	000	1690	.227887	000
1	.207095	027	1	.217747	026	1	.228144	026
2	.207365	054	2	.218010	052	2	.228400	051
3	.207634	081	3	.218273	079	3	.228657	077
4	.207903	108	4	.218535	105	4	.228913	102
5	.208172	135	5	.218798	131	5	.229170	128
6	.208441	162	6	.219060	157	6	.229426	154
7	.208710	188	7	.219322	183	7	.229682	179
8	.208978	215	8	.219584	210	8	.229938	205
9	.209247	241	9	.219846	236	9	.230193	231
1620	.209515	000	1660	.220108	000	1700	.230449	000
1	.209783	027	1	.220370	026	1	.230704	025
2	.210051	054	2	.220631	052	2	.230960	051
3	.210318	080	3	.220892	078	3	.231215	076
4	.210586	107	4	.221153	104	4	.231470	102
5	.210853	134	5	.221414	130	5	.231724	127
6	.211120	161	6	.221675	157	6	.231979	153
7	.211388	187	7	.221936	183	7	.232233	178
8	.211654	214	8	.222196	209	8	.232488	204
9	.211921	240	9	.222456	235	9	.232742	229
1630	.212188	000	1670	.222716	000	1710	.232996	000
1	.212454	027	1	.222976	026	1	.233250	025
2	.212720	053	2	.223236	052	2	.233504	051
3	.212986	080	3	.223496	078	3	.233757	076
4	.213252	106	4	.223755	104	4	.234011	101
5	.213518	133	5	.224015	130	5	.234264	127
6	.213783	159	6	.224274	156	6	.234517	152
7	.214049	186	7	.224533	182	7	.234770	177
8	.214314	212	8	.224792	208	8	.235023	202
9	.214579	239	9	.225051	234	9	.235276	228

眞數	對數	差	眞數	對數	差	眞數	對數	差 <sup>13</sup>
No.	Log.	part.	No.	Log.	part.	No.	Log.	part.
1720	.235528	000	1760	.245513	000	1800	.255272	000
1	.235781	025	1	.245759	025	1	.255514	024
2	.236033	050	2	.246006	049	2	.255755	048
3	.236285	076	3	.246252	074	3	.255996	072
4	.236537	101	4	.246499	098	4	.256236	096
5	.236789	126	5	.246745	123	5	.256477	120
6	.237041	151	6	.246991	148	6	.256718	144
7	.237292	176	7	.247236	173	7	.256958	168
8	.237544	202	8	.247482	197	8	.257198	192
9	.237795	227	9	.247728	221	9	.257439	216
1730	.238046	000	1770	.247973	000	1810	.257679	000
1	.238297	025	1	.248219	025	1	.257918	024
2	.238548	050	2	.248464	049	2	.258158	048
3	.238799	075	3	.248709	074	3	.258398	072
4	.239049	100	4	.248954	098	4	.258637	096
5	.239299	125	5	.249198	123	5	.258877	120
6	.239550	150	6	.249443	147	6	.259116	144
7	.239800	175	7	.249687	172	7	.259355	167
8	.240050	200	8	.249932	196	8	.259594	192
9	.240300	225	9	.250176	220	9	.259833	215
1740	.240549	000	1780	.250420	000	1820	.260071	000
1	.240799	025	1	.250664	024	1	.260310	024
2	.241048	050	2	.250908	049	2	.260548	048
3	.241297	075	3	.251151	073	3	.260787	071
4	.241546	100	4	.251395	097	4	.261025	095
5	.241795	124	5	.251638	121	5	.261263	119
6	.242044	149	6	.251881	146	6	.261501	143
7	.242293	174	7	.252125	171	7	.261738	167
8	.242541	199	8	.252367	195	8	.261976	191
9	.242790	223	9	.252610	219	9	.262214	214
1750	.243038	000	1790	.252853	000	1830	.262451	000
1	.243286	025	1	.253096	024	1	.262688	024
2	.243534	050	2	.253338	048	2	.262925	047
3	.243782	074	3	.253580	073	3	.263162	071
4	.244030	099	4	.253822	097	4	.263399	095
5	.244277	124	5	.254064	121	5	.263636	118
6	.244524	149	6	.254306	145	6	.263873	142
7	.244772	174	7	.254548	170	7	.264109	166
8	.245019	198	8	.254790	194	8	.264345	190
9	.245266	222	9	.255031	218	9	.264582	213



眞數	對數	差	眞數	對數	差	眞數	對數	差14
No.	Log.	part.	No.	Log.	part.	No.	Log.	part.
1840	.264818	000	1880	.274158	000	1920	.283301	000
1	.265054	023	1	.274389	023	1	.283527	023
2	.265290	047	2	.274620	046	2	.283753	045
3	.265525	070	3	.274850	069	3	.283979	068
4	.265761	094	4	.275081	092	4	.284205	090
5	.265996	117	5	.275311	115	5	.284431	113
6	.266232	141	6	.275542	138	6	.284656	135
7	.266467	164	7	.275772	161	7	.284882	158
8	.266702	188	8	.276002	184	8	.285107	180
9	.266937	211	9	.276232	207	9	.285332	203
1850	.267172	000	1890	.276462	000	1930	.285557	000
1	.267406	023	1	.276691	023	1	.285782	022
2	.267641	047	2	.276921	046	2	.286007	045
3	.267875	070	3	.277151	069	3	.286232	067
4	.268110	094	4	.277380	092	4	.286456	089
5	.268344	117	5	.277609	115	5	.286681	112
6	.268578	141	6	.277838	138	6	.286905	134
7	.268812	164	7	.278067	161	7	.287130	157
8	.269046	188	8	.278296	183	8	.287354	179
9	.269279	211	9	.278525	206	9	.287578	202
1860	.269513	000	1900	.278754	000	1940	.287802	000
1	.269746	023	1	.278982	023	1	.288025	022
2	.269980	047	2	.279210	045	2	.288249	045
3	.270213	070	3	.279439	068	3	.288473	067
4	.270446	093	4	.279667	091	4	.288696	089
5	.270679	116	5	.279895	114	5	.288920	112
6	.270912	140	6	.280123	137	6	.289143	134
7	.271144	163	7	.280351	160	7	.289366	156
8	.271377	186	8	.280578	182	8	.289589	178
9	.271609	210	9	.280806	205	9	.289812	201
1870	.271842	000	1910	.281033	000	1950	.290035	000
1	.272074	023	1	.281261	023	1	.290257	022
2	.272306	046	2	.281488	045	2	.290480	044
3	.272538	070	3	.281715	068	3	.290702	067
4	.272770	093	4	.281942	091	4	.290925	089
5	.273001	116	5	.282169	113	5	.291147	111
6	.273233	139	6	.282395	136	6	.291369	133
7	.273464	162	7	.282622	159	7	.291591	156
8	.273696	186	8	.282849	181	8	.291813	178
9	.273927	209	9	.283075	204	9	.292034	200

眞數	對數	差	眞數	對數	差	眞數	對數	差15
No.	Log.	part.	No.	Log.	part.	No.	Log.	part.
1960	.292256	000	2000	.301030	000	2040	.309630	000
1	.292478	022	1	.301247	022	1	.309843	021
2	.292699	044	2	.301464	043	2	.310056	043
3	.292920	066	3	.301681	065	3	.310268	064
4	.293141	088	4	.301898	087	4	.310481	085
5	.293363	110	5	.302114	108	5	.310693	106
6	.293583	133	6	.302331	130	6	.310906	127
7	.293804	155	7	.302547	152	7	.311118	148
8	.294025	177	8	.302764	173	8	.311330	170
9	.294246	199	9	.302980	195	9	.311542	191
1970	.294466	000	2010	.303196	000	2050	.311754	000
1	.294687	022	1	.303412	022	1	.311966	021
2	.294907	044	2	.303628	043	2	.312177	042
3	.295127	066	3	.303844	065	3	.312389	063
4	.295347	088	4	.304059	086	4	.312600	084
5	.295567	110	5	.304275	108	5	.312812	106
6	.295787	132	6	.304490	129	6	.313023	127
7	.296007	154	7	.304706	151	7	.313234	148
8	.296226	176	8	.304921	172	8	.313445	169
9	.296446	198	9	.305136	194	9	.313656	190
1980	.296665	000	2020	.305351	000	2060	.313867	000
1	.296884	022	1	.305566	021	1	.314078	021
2	.297104	044	2	.305781	043	2	.314289	042
3	.297323	066	3	.305996	064	3	.314499	063
4	.297542	088	4	.306210	086	4	.314710	084
5	.297760	109	5	.306425	107	5	.314920	105
6	.297979	131	6	.306639	129	6	.315130	126
7	.298198	153	7	.306854	150	7	.315340	147
8	.298416	175	8	.307068	172	8	.315550	168
9	.298635	197	9	.307282	193	9	.315760	189
1990	.298853	000	2030	.307496	000	2070	.315970	000
1	.299071	022	1	.307710	021	1	.316180	021
2	.299289	044	2	.307924	043	2	.316390	042
3	.299507	065	3	.308137	064	3	.316599	063
4	.299725	087	4	.308351	085	4	.316809	084
5	.299943	109	5	.308564	107	5	.317018	105
6	.300160	131	6	.308778	128	6	.317227	126
7	.300378	153	7	.308991	149	7	.317436	147
8	.300595	174	8	.309204	171	8	.317645	168
9	.300813	196	9	.309417	192	9	.317854	189



眞數	對數	差	眞數	對數	差	眞數	對數	差
No.	Log.	part.	No.	Log.	part.	No.	Log.	part.
2080	.318063	000	2120	.326336	000	2160	.334454	000
1	.318272	021	1	.326541	020	1	.334655	020
2	.318481	042	2	.326745	041	2	.334856	040
3	.318689	063	3	.326950	061	3	.335056	060
4	.318898	083	4	.327154	082	4	.335257	080
5	.319106	104	5	.327359	102	5	.335458	100
6	.319314	125	6	.327563	123	6	.335658	120
7	.319522	146	7	.327767	143	7	.335859	140
8	.319730	167	8	.327972	164	8	.336059	160
9	.319938	188	9	.328176	184	9	.336260	180
2090	.320146	000	2130	.328380	000	2170	.336460	000
1	.320354	021	1	.328583	020	1	.336660	020
2	.320562	041	2	.328787	041	2	.336860	040
3	.320769	062	3	.328991	061	3	.337060	060
4	.320977	083	4	.329194	081	4	.337259	080
5	.321184	104	5	.329398	102	5	.337459	100
6	.321391	125	6	.329601	122	6	.337659	120
7	.321598	145	7	.329804	142	7	.337858	140
8	.321805	166	8	.330008	163	8	.338058	160
9	.322012	187	9	.330211	183	9	.338257	180
2100	.322219	000	2140	.330414	000	2180	.338456	000
1	.322426	021	1	.330617	020	1	.338656	020
2	.322633	041	2	.330819	040	2	.338855	040
3	.322839	062	3	.331022	061	3	.339054	060
4	.323046	082	4	.331225	081	4	.339253	080
5	.323252	103	5	.331427	101	5	.339451	100
6	.323458	124	6	.331630	121	6	.339650	119
7	.323664	144	7	.331832	141	7	.339849	139
8	.323871	165	8	.332034	162	8	.340047	159
9	.324077	186	9	.332236	182	9	.340246	179
2110	.324282	000	2150	.332438	000	2190	.340444	000
1	.324488	021	1	.332640	020	1	.340642	020
2	.324694	041	2	.332842	040	2	.340840	040
3	.324899	062	3	.333044	060	3	.341039	059
4	.325105	082	4	.333246	081	4	.341237	079
5	.325310	103	5	.333447	101	5	.341434	099
6	.325516	123	6	.333649	121	6	.341632	119
7	.325721	144	7	.333850	141	7	.341830	139
8	.325926	164	8	.334051	161	8	.342028	158
9	.326131	185	9	.334253	181	9	.342225	178

眞數	對數	差	眞數	對數	差	眞數	對數	差
No.	Log.	part.	No.	Log.	part.	No.	Log.	part.
2200	.342423	000	2240	.350248	000	2280	.357935	000
1	.342620	020	1	.350442	019	1	.358125	019
2	.342817	039	2	.350636	039	2	.358316	038
3	.343014	059	3	.350829	058	3	.358506	057
4	.343212	079	4	.351023	077	4	.358696	076
5	.343409	099	5	.351216	097	5	.358886	095
6	.343605	118	6	.351410	116	6	.359076	114
7	.343802	138	7	.351603	135	7	.359266	133
8	.343999	158	8	.351796	155	8	.359456	152
9	.344196	178	9	.351989	174	9	.359646	171
2210	.344392	000	2250	.352182	000	2290	.359835	000
1	.344589	020	1	.352375	019	1	.360025	019
2	.344785	039	2	.352568	038	2	.360215	038
3	.344981	059	3	.352761	058	3	.360404	057
4	.345178	078	4	.352954	077	4	.360593	076
5	.345374	098	5	.353146	096	5	.360783	095
6	.345570	118	6	.353339	115	6	.360972	114
7	.345766	137	7	.353532	134	7	.361161	133
8	.345962	157	8	.353724	154	8	.361350	152
9	.346157	176	9	.353916	173	9	.361539	171
2220	.346353	000	2260	.354108	000	2300	.361728	000
1	.346549	019	1	.354301	019	1	.361917	019
2	.346744	039	2	.354493	038	2	.362105	038
3	.346939	058	3	.354685	058	3	.362294	056
4	.347135	078	4	.354876	077	4	.362482	075
5	.347330	097	5	.355068	096	5	.362671	094
6	.347525	117	6	.355260	115	6	.362859	113
7	.347720	137	7	.355451	134	7	.363048	132
8	.347915	156	8	.355643	154	8	.363236	151
9	.348110	175	9	.355834	173	9	.363424	170
2230	.348305	000	2270	.356026	000	2310	.363612	000
1	.348500	019	1	.356217	019	1	.363800	019
2	.348694	039	2	.356408	038	2	.363988	037
3	.348889	058	3	.356599	057	3	.364176	056
4	.349083	078	4	.356790	076	4	.364363	075
5	.349277	097	5	.356981	095	5	.364551	094
6	.349472	117	6	.357172	115	6	.364739	112
7	.349666	137	7	.357363	134	7	.364926	131
8	.349860	156	8	.357554	153	8	.365113	150
9	.350054	175	9	.357744	172	9	.365301	169



眞數	對數	差	眞數	對數	差	眞數	對數	差 18
No.	Log.	part.	No.	Log.	part.	No.	Log.	part.
2320	.365488	000	2360	.372912	000	2400	.380211	000
1	.365675	019	1	.373096	018	1	.380392	018
2	.365862	037	2	.373280	037	2	.380573	036
3	.366049	056	3	.373464	055	3	.380754	055
4	.366236	075	4	.373647	074	4	.380934	073
5	.366423	093	5	.373831	092	5	.381115	091
6	.366610	112	6	.374015	110	6	.381296	109
7	.366796	131	7	.374198	129	7	.381476	127
8	.366982	150	8	.374382	147	8	.381656	145
9	.367169	168	9	.374565	166	9	.381837	163
2330	.367356	000	2370	.374748	000	2410	.382017	000
1	.367542	019	1	.374932	018	1	.382197	018
2	.367728	037	2	.375115	037	2	.382377	036
3	.367915	056	3	.375298	055	3	.382557	054
4	.368101	075	4	.375481	073	4	.382737	072
5	.368287	093	5	.375664	092	5	.382917	090
6	.368473	112	6	.375846	110	6	.383097	108
7	.368659	130	7	.376029	128	7	.383277	126
8	.368844	149	8	.376212	147	8	.383456	144
9	.369030	167	9	.376394	165	9	.383636	162
2340	.369216	000	2380	.376577	000	2420	.383815	000
1	.369401	019	1	.376759	018	1	.383995	018
2	.369587	037	2	.376942	036	2	.384174	036
3	.369772	056	3	.377124	055	3	.384353	054
4	.369958	074	4	.377306	073	4	.384533	072
5	.370143	093	5	.377488	091	5	.384712	090
6	.370328	111	6	.377670	109	6	.384891	108
7	.370513	130	7	.377852	127	7	.385070	126
8	.370698	148	8	.378034	146	8	.385249	144
9	.370883	167	9	.378216	164	9	.385427	162
2350	.371068	000	2390	.378398	000	2430	.385606	000
1	.371253	018	1	.378580	018	1	.385785	018
2	.371437	037	2	.378761	036	2	.385964	035
3	.371622	055	3	.378943	055	3	.386142	053
4	.371806	074	4	.379124	073	4	.386321	071
5	.371991	092	5	.379305	091	5	.386499	089
6	.372175	111	6	.379487	109	6	.386677	107
7	.372360	129	7	.379668	127	7	.386855	125
8	.372544	148	8	.379849	146	8	.387034	143
9	.372728	166	9	.380030	164	9	.387212	161

眞數	對數	差	眞數	對數	差	眞數	對數	差 19
No.	Log.	part.	No.	Log.	part.	No.	Log.	part.
2440	.387390	000	2480	.394452	000	2520	.401400	000
1	.387568	018	1	.394627	017	1	.401573	017
2	.387746	036	2	.394802	035	2	.401745	034
3	.387923	053	3	.394977	053	3	.401917	052
4	.388101	071	4	.395152	070	4	.402089	069
5	.388279	089	5	.395326	087	5	.402261	086
6	.388456	107	6	.395501	104	6	.402433	103
7	.388634	125	7	.395676	122	7	.402605	120
8	.388811	142	8	.395850	139	8	.402777	138
9	.388989	160	9	.396025	157	9	.402949	155
2450	.389166	000	2490	.396199	000	2530	.403120	000
1	.389343	018	1	.396374	017	1	.403292	017
2	.389520	036	2	.396548	035	2	.403464	034
3	.389697	053	3	.396722	053	3	.403635	052
4	.389875	071	4	.396896	070	4	.403807	069
5	.390051	089	5	.397070	087	5	.403978	086
6	.390228	107	6	.397245	104	6	.404149	103
7	.390405	125	7	.397418	122	7	.404320	120
8	.390582	142	8	.397592	139	8	.404492	137
9	.390758	160	9	.397766	157	9	.404663	154
2460	.390935	000	2500	.397940	000	2540	.404834	000
1	.391112	018	1	.398114	017	1	.405005	017
2	.391288	035	2	.398287	035	2	.405175	034
3	.391464	053	3	.398461	053	3	.405346	051
4	.391641	070	4	.398634	069	4	.405517	068
5	.391817	088	5	.398808	087	5	.405688	085
6	.391993	106	6	.398981	104	6	.405858	102
7	.392169	123	7	.399154	121	7	.406029	119
8	.392345	141	8	.399327	138	8	.406199	136
9	.392521	158	9	.399501	156	9	.406370	153
2470	.392697	000	2510	.399674	000	2550	.406540	000
1	.392873	018	1	.399847	017	1	.406710	017
2	.393048	035	2	.400020	035	2	.406881	034
3	.393224	053	3	.400192	053	3	.407051	051
4	.393400	070	4	.400365	069	4	.407221	068
5	.393575	088	5	.400538	087	5	.407391	085
6	.393751	106	6	.400711	104	6	.407561	102
7	.393926	123	7	.400883	121	7	.407731	119
8	.394101	141	8	.401056	138	8	.407900	136
9	.394276	158	9	.401228	156	9	.408070	153



眞數	對數	差	眞數	對數	差	眞數	對數	差 20
No.	Log.	part.	No.	Log.	part.	No.	Log.	part.
2560	.408240	000	2600	.414973	000	2640	.421604	000
1	.408410	017	1	.415140	017	1	.421768	016
2	.408579	034	2	.415307	033	2	.421933	033
3	.408749	051	3	.415474	050	3	.422097	049
4	.408918	068	4	.415641	067	4	.422261	066
5	.409087	085	5	.415808	084	5	.422426	082
6	.409257	102	6	.415974	101	6	.422590	099
7	.409426	119	7	.416141	117	7	.422754	115
8	.409595	136	8	.416308	134	8	.422918	132
9	.409764	153	9	.416474	150	9	.423082	148
2570	.409933	000	2610	.416640	000	2650	.423246	000
1	.410102	017	1	.416807	017	1	.423410	016
2	.410271	034	2	.416973	033	2	.423573	033
3	.410440	050	3	.417139	050	3	.423737	049
4	.410608	067	4	.417306	066	4	.423901	065
5	.410777	084	5	.417472	083	5	.424064	081
6	.410946	101	6	.417638	100	6	.424228	098
7	.411114	118	7	.417804	116	7	.424392	114
8	.411283	135	8	.417970	133	8	.424555	131
9	.411451	152	9	.418135	149	9	.424718	147
2580	.411620	000	2620	.418301	000	2660	.424882	000
1	.411788	017	1	.418467	017	1	.425045	016
2	.411956	034	2	.418633	033	2	.425208	033
3	.412124	050	3	.418798	050	3	.425371	049
4	.412292	067	4	.418964	066	4	.425534	065
5	.412460	084	5	.419129	083	5	.425697	081
6	.412628	101	6	.419295	099	6	.425860	098
7	.412796	118	7	.419460	116	7	.426023	114
8	.412964	135	8	.419625	132	8	.426186	130
9	.413132	152	9	.419791	149	9	.426349	147
2590	.413300	000	2630	.419956	000	2670	.426511	000
1	.413467	017	1	.420121	016	1	.426674	016
2	.413635	033	2	.420286	033	2	.426836	033
3	.413802	050	3	.420451	049	3	.426999	049
4	.413970	067	4	.420616	066	4	.427161	065
5	.414137	084	5	.420781	082	5	.427324	081
6	.414305	101	6	.420945	099	6	.427486	098
7	.414472	117	7	.421110	115	7	.427648	114
8	.414639	134	8	.421275	132	8	.427811	130
9	.414806	151	9	.421439	148	9	.427973	147

眞數	對數	差	眞數	對數	差	眞數	對數	差 21
No.	Log.	part.	No.	Log.	part.	No.	Log.	part.
2680	.428135	000	2720	.434569	000	2760	.440909	000
1	.428297	016	1	.434728	016	1	.441066	016
2	.428459	032	2	.434888	032	2	.441224	031
3	.428621	048	3	.435048	048	3	.441381	047
4	.428782	065	4	.435207	064	4	.441538	063
5	.428944	081	5	.435366	080	5	.441695	078
6	.429106	097	6	.435526	096	6	.441852	094
7	.429268	113	7	.435685	112	7	.442009	110
8	.429429	129	8	.435844	128	8	.442166	126
9	.429591	145	9	.436003	144	9	.442323	141
2690	.429752	000	2730	.436163	000	2770	.442480	000
1	.429914	016	1	.436322	016	1	.442636	016
2	.430075	032	2	.436481	032	2	.442793	031
3	.430236	048	3	.436640	047	3	.442950	047
4	.430398	065	4	.436798	063	4	.443106	063
5	.430559	081	5	.436957	079	5	.443263	078
6	.430720	097	6	.437116	095	6	.443419	094
7	.430881	113	7	.437275	111	7	.443576	110
8	.431042	129	8	.437433	127	8	.443732	126
9	.431203	145	9	.437592	143	9	.443888	141
2700	.431364	000	2740	.437751	000	2780	.444045	000
1	.431525	016	1	.437909	016	1	.444201	016
2	.431685	032	2	.438067	032	2	.444357	031
3	.431846	048	3	.438226	047	3	.444513	047
4	.432007	064	4	.438384	063	4	.444669	062
5	.432167	080	5	.438542	079	5	.444825	078
6	.432328	096	6	.438700	095	6	.444981	094
7	.432488	112	7	.438859	111	7	.445137	109
8	.432649	128	8	.439017	127	8	.445293	125
9	.432809	144	9	.439175	143	9	.445448	140
2710	.432969	000	2750	.439333	000	2790	.445604	000
1	.433129	016	1	.439491	016	1	.445760	016
2	.433290	032	2	.439648	032	2	.445915	031
3	.433450	048	3	.439806	047	3	.446071	047
4	.433610	064	4	.439964	063	4	.446226	062
5	.433770	080	5	.440122	079	5	.446382	078
6	.433930	096	6	.440279	095	6	.446537	094
7	.434090	112	7	.440437	111	7	.446692	109
8	.434249	128	8	.440594	126	8	.446848	125
9	.434409	144	9	.440752	142	9	.447003	140



眞數	對數	差	眞數	對數	差	眞數	對數	差 22
No.	Log.	part.	No.	Log.	part.	No.	Log.	part.
2800	.447158	000	2840	.453318	000	2880	.459392	000
1	.447313	015	1	.453471	015	1	.459543	015
2	.447468	031	2	.453624	031	2	.459694	030
3	.447623	046	3	.453777	046	3	.459845	045
4	.447778	062	4	.453930	061	4	.459995	061
5	.447933	077	5	.454082	077	5	.460146	076
6	.448088	093	6	.454235	092	6	.460296	091
7	.448242	108	7	.454387	107	7	.460447	106
8	.448397	124	8	.454540	123	8	.460597	121
9	.448552	139	9	.454692	138	9	.460747	136
2810	.448706	000	2850	.454845	000	2890	.460898	000
1	.448861	015	1	.454997	015	1	.461048	015
2	.449015	031	2	.455149	030	2	.461198	030
3	.449170	046	3	.455302	046	3	.461348	045
4	.449324	062	4	.455454	061	4	.461498	060
5	.449478	077	5	.455606	076	5	.461649	075
6	.449633	092	6	.455758	091	6	.461799	090
7	.449787	108	7	.455910	106	7	.461948	105
8	.449941	123	8	.456062	122	8	.462098	120
9	.450095	139	9	.456214	137	9	.462248	135
2820	.450249	000	2860	.456366	000	2900	.462398	000
1	.450403	015	1	.456518	015	1	.462548	015
2	.450557	031	2	.456670	030	2	.462697	030
3	.450711	046	3	.456821	046	3	.462847	045
4	.450865	062	4	.456973	061	4	.462997	060
5	.451018	077	5	.457125	076	5	.463146	075
6	.451172	092	6	.457276	091	6	.463296	090
7	.451326	108	7	.457428	106	7	.463445	105
8	.451479	123	8	.457579	122	8	.463594	120
9	.451633	139	9	.457730	137	9	.463744	135
2830	.451786	000	2870	.457882	000	2910	.463893	000
1	.451940	015	1	.458033	015	1	.464042	015
2	.452093	031	2	.458184	030	2	.464191	030
3	.452247	046	3	.458336	045	3	.464340	045
4	.452400	061	4	.458487	061	4	.464489	060
5	.452553	077	5	.458638	076	5	.464639	075
6	.452706	092	6	.458789	091	6	.464787	090
7	.452859	107	7	.458940	106	7	.464936	105
8	.453012	123	8	.459091	121	8	.465085	120
9	.453165	138	9	.459242	136	9	.465234	135

眞數	對數	差	眞數	對數	差	眞數	對數	差 23
No.	Log.	part.	No.	Log.	part.	No.	Log.	part.
2920	.465383	000	2960	.471292	000	3000	.477121	000
1	.465532	015	1	.471438	015	1	.477266	014
2	.465680	030	2	.471585	029	2	.477411	029
3	.465829	044	3	.471732	044	3	.477555	043
4	.465977	059	4	.471878	059	4	.477700	058
5	.466126	074	5	.472025	073	5	.477844	072
6	.466274	089	6	.472171	088	6	.477989	087
7	.466423	104	7	.472317	102	7	.478133	101
8	.466571	118	8	.472464	117	8	.478278	116
9	.466719	133	9	.472610	132	9	.478422	130
2930	.466868	000	2970	.472756	000	3010	.478566	000
1	.467016	015	1	.472903	015	1	.478711	014
2	.467164	030	2	.473049	029	2	.478855	029
3	.467312	044	3	.473195	044	3	.478999	043
4	.467460	059	4	.473341	059	4	.479143	058
5	.467608	074	5	.473487	073	5	.479287	072
6	.467756	089	6	.473633	088	6	.479431	086
7	.467904	104	7	.473779	102	7	.479575	101
8	.468052	118	8	.473925	117	8	.479719	115
9	.468200	133	9	.474070	132	9	.479863	130
2940	.468347	000	2980	.474216	000	3020	.480007	000
1	.468495	015	1	.474362	015	1	.480151	014
2	.468643	030	2	.474508	029	2	.480294	029
3	.468790	044	3	.474653	044	3	.480438	043
4	.468938	059	4	.474799	058	4	.480582	058
5	.469085	074	5	.474944	073	5	.480725	072
6	.469233	089	6	.475090	088	6	.480869	086
7	.469380	104	7	.475235	102	7	.481012	101
8	.469527	118	8	.475381	117	8	.481156	115
9	.469675	133	9	.475526	131	9	.481299	130
2950	.469822	000	2990	.475671	000	3030	.481443	000
1	.469969	015	1	.475816	015	1	.481586	014
2	.470116	029	2	.475962	029	2	.481729	029
3	.470263	044	3	.476107	043	3	.481872	043
4	.470410	059	4	.476252	058	4	.482016	057
5	.470557	074	5	.476397	072	5	.482159	071
6	.470704	088	6	.476542	087	6	.482302	086
7	.470851	103	7	.476687	101	7	.482445	100
8	.470998	118	8	.476832	116	8	.482588	114
9	.471145	132	9	.476976	130	9	.482731	129



眞數	對數	差	眞數	對數	差	眞數	對數	差 24
No.	Log.	part.	No.	Log.	part.	No.	Log.	part.
3040	.482874	000	3080	.488551	000	3120	.494155	000
1	.483016	014	1	.488692	014	1	.494294	014
2	.483159	028	2	.488833	028	2	.494433	028
3	.483302	043	3	.488973	042	3	.494572	041
4	.483445	057	4	.489114	056	4	.494711	056
5	.483587	071	5	.489255	070	5	.494850	069
6	.483730	085	6	.489396	084	6	.494989	083
7	.483872	099	7	.489537	098	7	.495128	097
8	.484015	114	8	.489677	112	8	.495267	111
9	.484157	128	9	.489818	126	9	.495406	125
3050	.484300	000	3090	.489958	000	3130	.495544	000
1	.484442	014	1	.490099	014	1	.495683	014
2	.484584	028	2	.490239	028	2	.495822	028
3	.484727	043	3	.490380	042	3	.495960	041
4	.484869	057	4	.490520	056	4	.496099	056
5	.485011	071	5	.490661	070	5	.496237	069
6	.485153	085	6	.490801	084	6	.496376	083
7	.485295	099	7	.490941	098	7	.496514	097
8	.485437	114	8	.491081	112	8	.496653	111
9	.485579	128	9	.491222	126	9	.496791	125
3060	.485721	000	3100	.491362	000	3140	.496930	000
1	.485863	014	1	.491502	014	1	.497068	014
2	.486005	028	2	.491642	028	2	.497206	028
3	.486147	043	3	.491782	042	3	.497344	041
4	.486289	057	4	.491922	056	4	.497482	055
5	.486430	071	5	.492062	070	5	.497621	069
6	.486572	085	6	.492201	084	6	.497759	083
7	.486714	099	7	.492341	098	7	.497897	097
8	.486855	114	8	.492481	112	8	.498035	110
9	.486997	128	9	.492621	126	9	.498173	124
3070	.487138	000	3110	.492760	000	3150	.498311	000
1	.487280	014	1	.492900	014	1	.498448	014
2	.487421	028	2	.493040	028	2	.498586	028
3	.487563	042	3	.493179	042	3	.498724	041
4	.487704	057	4	.493319	056	4	.498862	055
5	.487845	071	5	.493458	070	5	.498999	069
6	.487986	085	6	.493597	084	6	.499137	083
7	.488127	099	7	.493737	098	7	.499275	097
8	.488269	113	8	.493876	112	8	.499412	110
9	.488410	127	9	.494015	126	9	.499550	124

眞數	對數	差	眞數	對數	差	眞數	對數	差 25
No.	Log.	part.	No.	Log.	part.	No.	Log.	part.
3160	.499687	000	3200	.505150	000	3240	.510545	000
1	.499824	014	1	.505286	014	1	.510679	013
2	.499962	027	2	.505421	027	2	.510813	027
3	.500099	041	3	.505557	041	3	.510947	040
4	.500236	055	4	.505692	054	4	.511081	054
5	.500374	068	5	.505828	068	5	.511215	067
6	.500511	082	6	.505963	082	6	.511348	080
7	.500648	096	7	.506099	095	7	.511482	094
8	.500785	110	8	.506234	109	8	.511616	107
9	.500922	123	9	.506370	122	9	.511750	121
3170	.501059	000	3210	.506505	000	3250	.511883	000
1	.501196	014	1	.506640	013	1	.512017	013
2	.501333	027	2	.506775	027	2	.512150	027
3	.501470	041	3	.506911	040	3	.512284	040
4	.501607	055	4	.507046	054	4	.512417	053
5	.501744	068	5	.507181	067	5	.512551	067
6	.501880	082	6	.507316	081	6	.512684	080
7	.502017	096	7	.507451	094	7	.512818	093
8	.502154	110	8	.507586	108	8	.512951	107
9	.502290	123	9	.507721	121	9	.513084	120
3180	.502427	000	3220	.507856	000	3260	.513218	000
1	.502564	014	1	.507991	013	1	.513351	013
2	.502700	027	2	.508125	027	2	.513484	027
3	.502837	041	3	.508260	040	3	.513617	040
4	.502973	054	4	.508395	054	4	.513750	053
5	.503109	068	5	.508530	067	5	.513883	066
6	.503246	082	6	.508664	081	6	.514016	080
7	.503382	095	7	.508799	094	7	.514149	093
8	.503518	109	8	.508933	108	8	.514282	106
9	.503654	123	9	.509068	121	9	.514415	120
3190	.503791	000	3230	.509202	000	3270	.514548	000
1	.503927	014	1	.509337	013	1	.514680	013
2	.504063	027	2	.509471	027	2	.514813	027
3	.504199	041	3	.509606	040	3	.514946	040
4	.504335	054	4	.509740	054	4	.515079	053
5	.504471	068	5	.509874	067	5	.515211	066
6	.504607	082	6	.510008	081	6	.515344	080
7	.504743	095	7	.510143	094	7	.515476	093
8	.504878	109	8	.510277	108	8	.515609	106
9	.505014	122	9	.510411	121	9	.515741	120



眞數	對數	差	眞數	對數	差	眞數	對數	差 26
No.	Log.	part.	No.	Log.	part.	No.	Log.	part.
3280	.515874	000	3320	.521138	000	3360	.526339	000
1	.516006	013	1	.521269	013	1	.526468	013
2	.516139	026	2	.521400	026	2	.526598	026
3	.516271	040	3	.521530	039	3	.526727	039
4	.516403	053	4	.521661	052	4	.526856	052
5	.516535	066	5	.521792	065	5	.526985	065
6	.516668	079	6	.521922	078	6	.527114	078
7	.516800	092	7	.522053	097	7	.527243	091
8	.516932	106	8	.522183	104	8	.527372	104
9	.517064	119	9	.522314	117	9	.527501	117
3290	.517196	000	3330	.522444	000	3370	.527630	000
1	.517328	013	1	.522575	013	1	.527759	013
2	.517460	026	2	.522705	026	2	.527888	026
3	.517592	040	3	.522835	039	3	.528016	038
4	.517724	053	4	.522966	052	4	.528145	051
5	.517855	066	5	.523096	065	5	.528274	064
6	.517987	079	6	.523226	078	6	.528402	077
7	.518119	092	7	.523356	097	7	.528531	090
8	.518251	106	8	.523486	104	8	.528660	103
9	.518382	119	9	.523616	117	9	.528788	116
3300	.518514	000	3340	.523746	000	3380	.528917	000
1	.518645	013	1	.523876	013	1	.529045	013
2	.518777	026	2	.524006	026	2	.529174	026
3	.518909	039	3	.524136	039	3	.529302	038
4	.519040	052	4	.524266	052	4	.529430	051
5	.519171	066	5	.524396	065	5	.529559	064
6	.519303	079	6	.524526	078	6	.529687	077
7	.519434	092	7	.524656	091	7	.529815	090
8	.519565	105	8	.524785	104	8	.529943	103
9	.519697	118	9	.524915	117	9	.530072	116
3310	.519828	000	3350	.525045	000	3390	.530200	000
1	.519959	013	1	.525174	013	1	.530328	013
2	.520090	026	2	.525304	026	2	.530456	026
3	.520221	039	3	.525434	039	3	.530584	038
4	.520352	052	4	.525563	052	4	.530712	051
5	.520483	066	5	.525692	065	5	.530840	064
6	.520614	079	6	.525822	078	6	.530968	077
7	.520745	092	7	.525951	091	7	.531095	090
8	.520876	105	8	.526081	104	8	.531223	102
9	.521007	118	9	.526210	117	9	.531351	115

眞數	對數	差	眞數	對數	差	眞數	對數	差 27
No.	Log.	part.	No.	Log.	part.	No.	Log.	part.
3400	.531479	000	3440	.536558	000	3480	.541579	000
1	.531607	013	1	.536685	013	1	.541704	012
2	.531734	025	2	.536811	025	2	.541829	025
3	.531862	038	3	.536937	038	3	.541953	037
4	.531990	051	4	.537063	050	4	.542078	050
5	.532117	063	5	.537189	063	5	.542203	062
6	.532245	076	6	.537315	076	6	.542327	075
7	.532372	089	7	.537441	088	7	.542452	087
8	.532500	102	8	.537567	101	8	.542576	100
9	.532627	114	9	.537693	114	9	.542701	112
3410	.532754	000	3450	.537819	000	3490	.542825	000
1	.532882	013	1	.537945	013	1	.542950	012
2	.533009	025	2	.538071	025	2	.543074	025
3	.533136	038	3	.538197	038	3	.543199	037
4	.533263	051	4	.538322	050	4	.543323	050
5	.533391	063	5	.538448	063	5	.543447	062
6	.533518	076	6	.538574	076	6	.543571	075
7	.533645	089	7	.538699	088	7	.543696	087
8	.533772	102	8	.538825	101	8	.543820	100
9	.533899	114	9	.538951	114	9	.543944	112
3420	.534026	000	3460	.539076	000	3500	.544068	000
1	.534153	013	1	.539202	013	1	.544192	012
2	.534280	025	2	.539327	025	2	.544316	025
3	.534407	038	3	.539452	038	3	.544440	037
4	.534534	051	4	.539578	050	4	.544564	050
5	.534661	063	5	.539703	063	5	.544688	062
6	.534787	076	6	.539829	075	6	.544812	074
7	.534914	089	7	.539954	088	7	.544936	087
8	.535041	102	8	.540079	100	8	.545060	099
9	.535167	114	9	.540204	113	9	.545183	112
3430	.535294	000	3470	.540329	000	3510	.545307	000
1	.535421	013	1	.540455	012	1	.545431	012
2	.535547	025	2	.540580	025	2	.545554	025
3	.535674	038	3	.540705	037	3	.545678	037
4	.535800	050	4	.540830	050	4	.545802	049
5	.535927	063	5	.540955	062	5	.545925	062
6	.536053	076	6	.541080	075	6	.546049	074
7	.536179	088	7	.541205	087	7	.546172	086
8	.536306	101	8	.541330	100	8	.546296	099
9	.536432	114	9	.541454	112	9	.546419	111



眞數	對數	差	眞數	對數	差	眞數	對數	差 28
No.	Log.	part.	No.	Log.	part.	No.	Log.	part.
3520	.546543	000	3560	.551450	000	3600	.556302	000
1	.546666	012	1	.551572	012	1	.556423	012
2	.546789	025	2	.551694	024	2	.556544	024
3	.546913	037	3	.551816	037	3	.556664	036
4	.547036	049	4	.551938	049	4	.556785	048
5	.547159	062	5	.552059	061	5	.556905	060
6	.547282	074	6	.552181	073	6	.557026	072
7	.547405	086	7	.552303	086	7	.557146	084
8	.547529	099	8	.552425	098	8	.557266	096
9	.547652	111	9	.552546	110	9	.557387	108
3530	.547775	000	3570	.552668	000	3610	.557507	000
1	.547898	012	1	.552790	012	1	.557627	012
2	.548021	025	2	.552911	024	2	.557748	024
3	.548144	037	3	.553033	036	3	.557868	036
4	.548266	049	4	.553154	049	4	.557988	048
5	.548389	061	5	.553276	061	5	.558108	060
6	.548512	074	6	.553397	073	6	.558228	072
7	.548635	086	7	.553519	085	7	.558348	084
8	.548758	098	8	.553640	097	8	.558469	096
9	.548881	111	9	.553762	109	9	.558589	108
3540	.549003	000	3580	.553883	000	3620	.558709	000
1	.549126	012	1	.554004	012	1	.558828	012
2	.549249	025	2	.554126	024	2	.558948	024
3	.549371	037	3	.554247	036	3	.559068	036
4	.549494	049	4	.554368	049	4	.559188	048
5	.549616	061	5	.554489	061	5	.559308	060
6	.549739	074	6	.554610	073	6	.559428	072
7	.549861	086	7	.554731	085	7	.559548	084
8	.549984	098	8	.554852	097	8	.559667	096
9	.550106	111	9	.554973	109	9	.559787	108
3550	.550228	000	3590	.555094	000	3630	.559907	000
1	.550351	012	1	.555215	012	1	.560026	012
2	.550473	024	2	.555336	024	2	.560146	024
3	.550595	037	3	.555457	036	3	.560265	036
4	.550717	049	4	.555578	048	4	.560385	048
5	.550840	061	5	.555699	060	5	.560504	060
6	.550962	073	6	.555820	072	6	.560624	072
7	.551084	086	7	.555940	084	7	.560743	084
8	.551206	098	8	.556061	096	8	.560863	096
9	.551328	110	9	.556182	108	9	.560982	108

眞數	對數	差	眞數	對數	差	眞數	對數	差 29
No.	Log.	part.	No.	Log.	part.	No.	Log.	part.
3640	.561101	000	3680	.565848	000	3720	.570543	000
1	.561221	012	1	.565966	012	1	.570660	012
2	.561340	024	2	.566084	024	2	.570776	023
3	.561459	036	3	.566202	035	3	.570893	035
4	.561578	048	4	.566320	047	4	.571010	047
5	.561697	060	5	.566437	059	5	.571126	058
6	.561817	072	6	.566555	071	6	.571243	070
7	.561936	084	7	.566673	083	7	.571359	081
8	.562055	096	8	.566791	094	8	.571476	093
9	.562174	108	9	.566909	106	9	.571592	105
3650	.562293	000	3690	.567026	000	3730	.571709	000
1	.562412	012	1	.567144	012	1	.571825	012
2	.562531	024	2	.567262	024	2	.571942	023
3	.562650	036	3	.567379	035	3	.572058	035
4	.562768	048	4	.567497	047	4	.572174	047
5	.562887	060	5	.567614	059	5	.572291	058
6	.563006	071	6	.567732	071	6	.572407	070
7	.563125	083	7	.567849	083	7	.572523	081
8	.563244	095	8	.567967	094	8	.572639	093
9	.563362	107	9	.568084	106	9	.572755	105
3660	.563481	000	3700	.568202	000	3740	.572872	000
1	.563600	012	1	.568319	012	1	.572988	012
2	.563718	024	2	.568436	023	2	.573104	023
3	.563837	036	3	.568554	035	3	.573220	035
4	.563955	048	4	.568671	047	4	.573336	046
5	.564074	060	5	.568788	058	5	.573452	058
6	.564192	071	6	.568905	070	6	.573568	070
7	.564311	083	7	.569023	082	7	.573684	081
8	.564429	095	8	.569140	094	8	.573800	093
9	.564548	107	9	.569257	106	9	.573915	104
3670	.564666	000	3710	.569374	000	3750	.574031	000
1	.564784	012	1	.569491	012	1	.574147	012
2	.564903	024	2	.569608	023	2	.574263	023
3	.565021	036	3	.569725	035	3	.574379	035
4	.565139	047	4	.569842	047	4	.574494	046
5	.565257	059	5	.569959	058	5	.574610	058
6	.565375	071	6	.570076	070	6	.574726	070
7	.565494	083	7	.570193	082	7	.574841	081
8	.565612	095	8	.570309	094	8	.574957	093
9	.565730	107	9	.570426	106	9	.575072	104



眞數	對數	差	眞數	對數	差	眞數	對數	差 30
No.	Log.	part.	No.	Log.	part.	No.	Log.	part.
3760	.575188	000	3800	.579784	000	3840	.584331	000
1	.575303	012	1	.579898	011	1	.584444	011
2	.575419	023	2	.580012	023	2	.584557	023
3	.575534	035	3	.580126	034	3	.584670	034
4	.575650	046	4	.580240	046	4	.584783	045
5	.575765	058	5	.580355	057	5	.584896	056
6	.575880	069	6	.580469	068	6	.585009	068
7	.575996	080	7	.580583	080	7	.585122	079
8	.576111	092	8	.580697	091	8	.585235	090
9	.576226	104	9	.580811	103	9	.585348	102
3770	.576341	000	3810	.580925	000	3850	.585461	000
1	.576456	012	1	.581039	011	1	.585573	011
2	.576572	023	2	.581153	023	2	.585686	022
3	.576687	035	3	.581267	034	3	.585799	034
4	.576802	046	4	.581381	046	4	.585912	045
5	.576917	058	5	.581494	057	5	.586024	056
6	.577032	069	6	.581608	068	6	.586137	067
7	.577147	080	7	.581722	080	7	.586250	078
8	.577262	092	8	.581836	091	8	.586362	090
9	.577377	104	9	.581950	103	9	.586475	101
3780	.577492	000	3820	.582063	000	3860	.586587	000
1	.577607	011	1	.582177	011	1	.586700	011
2	.577721	023	2	.582291	023	2	.586812	022
3	.577836	034	3	.582404	034	3	.586925	034
4	.577951	046	4	.582518	045	4	.587037	045
5	.578066	057	5	.582631	056	5	.587149	056
6	.578181	068	6	.582745	068	6	.587262	067
7	.578295	080	7	.582858	079	7	.587374	078
8	.578410	091	8	.582972	090	8	.587486	090
9	.578525	103	9	.583085	102	9	.587599	101
3790	.578639	000	3830	.583199	000	3870	.587711	000
1	.578754	011	1	.583312	011	1	.587823	011
2	.578868	023	2	.583425	023	2	.587935	022
3	.578983	034	3	.583539	034	3	.588047	034
4	.579097	046	4	.583652	045	4	.588160	045
5	.579212	057	5	.583765	056	5	.588272	056
6	.579326	068	6	.583879	068	6	.588384	067
7	.579441	080	7	.583992	079	7	.588496	078
8	.579555	091	8	.584105	090	8	.588608	090
9	.579669	103	9	.584218	102	9	.588720	101

眞數	對數	差	眞數	對數	差	眞數	對數	差 31
No.	Log.	part.	No.	Log.	part.	No.	Log.	part.
3880	.588832	000	3920	.593286	000	3960	.597695	000
1	.588944	011	1	.593397	011	1	.597805	011
2	.589055	022	2	.593508	022	2	.597914	022
3	.589167	033	3	.593618	033	3	.598024	033
4	.589279	044	4	.593729	044	4	.598134	044
5	.589391	056	5	.593840	055	5	.598243	055
6	.589503	067	6	.593950	066	6	.598353	066
7	.589614	078	7	.594061	077	7	.598462	077
8	.589726	089	8	.594171	088	8	.598572	088
9	.589838	100	9	.594282	099	9	.598681	099
3890	.589950	000	3930	.594393	000	3970	.598790	000
1	.590061	011	1	.594503	011	1	.598900	011
2	.590173	022	2	.594613	022	2	.599009	022
3	.590284	033	3	.594724	033	3	.599119	033
4	.590396	044	4	.594834	044	4	.599228	044
5	.590507	056	5	.594945	055	5	.599337	055
6	.590619	067	6	.595055	066	6	.599446	066
7	.590730	078	7	.595165	077	7	.599556	077
8	.590842	089	8	.595276	088	8	.599665	088
9	.590953	100	9	.595386	099	9	.599774	099
3900	.591065	000	3940	.595496	000	3980	.599883	000
1	.591176	011	1	.595606	011	1	.599992	011
2	.591287	022	2	.595717	022	2	.600101	022
3	.591399	033	3	.595827	033	3	.600210	033
4	.591510	044	4	.595937	044	4	.600319	044
5	.591621	056	5	.596047	055	5	.600428	054
6	.591732	067	6	.596157	066	6	.600537	065
7	.591843	078	7	.596267	077	7	.600646	076
8	.591955	089	8	.596377	088	8	.600755	087
9	.592066	100	9	.596487	099	9	.600864	098
3910	.592177	000	3950	.596597	000	3990	.600973	000
1	.592288	011	1	.596707	011	1	.601082	011
2	.592399	022	2	.596817	022	2	.601190	022
3	.592510	033	3	.596927	033	3	.601299	033
4	.592621	044	4	.597037	044	4	.601408	044
5	.592732	055	5	.597146	055	5	.601517	054
6	.592843	067	6	.597256	066	6	.601625	065
7	.592954	078	7	.597366	077	7	.601734	076
8	.593064	089	8	.597476	088	8	.601843	087
9	.593175	100	9	.597585	099	9	.601951	098



眞數	對數	差	眞數	對數	差	眞數	對數	差 32
No.	Log.	part.	No.	Log.	part.	No.	Log.	part.
4000	.602060	000	4040	.606381	000	4080	.610660	000
1	.602169	011	1	.606489	011	1	.610767	011
2	.602277	022	2	.606596	021	2	.610873	021
3	.602386	033	3	.606704	032	3	.610979	032
4	.602494	043	4	.606811	043	4	.611086	042
5	.602602	054	5	.606918	054	5	.611192	053
6	.602711	065	6	.607026	064	6	.611298	064
7	.602819	076	7	.607133	075	7	.611405	074
8	.602928	087	8	.607240	086	8	.611511	085
9	.603036	098	9	.607348	096	9	.611617	095
4010	.603144	000	4050	.607455	000	4090	.611723	000
1	.603253	011	1	.607562	011	1	.611829	011
2	.603361	022	2	.607669	021	2	.611936	021
3	.603469	033	3	.607777	032	3	.612042	032
4	.603577	043	4	.607884	043	4	.612148	042
5	.603685	054	5	.607991	054	5	.612254	053
6	.603794	065	6	.608098	064	6	.612360	064
7	.603902	076	7	.608205	075	7	.612466	074
8	.604010	087	8	.608312	086	8	.612572	085
9	.604118	098	9	.608419	096	9	.612678	095
4020	.604226	000	4060	.608526	000	4100	.612784	000
1	.604334	011	1	.608633	011	1	.612890	011
2	.604442	022	2	.608740	021	2	.612996	021
3	.604550	032	3	.608847	032	3	.613101	032
4	.604658	043	4	.608954	043	4	.613207	042
5	.604766	054	5	.609060	053	5	.613313	053
6	.604874	065	6	.609167	064	6	.613419	064
7	.604982	076	7	.609274	075	7	.613525	074
8	.605089	086	8	.609381	086	8	.613630	085
9	.605197	097	9	.609488	096	9	.613736	095
4030	.605305	000	4070	.609594	000	4110	.613842	000
1	.605413	011	1	.609701	011	1	.613947	011
2	.605520	022	2	.609808	021	2	.614053	021
3	.605628	032	3	.609914	032	3	.614159	032
4	.605736	043	4	.610021	043	4	.614264	042
5	.605843	054	5	.610128	053	5	.614370	053
6	.605951	065	6	.610234	064	6	.614475	063
7	.606059	076	7	.610341	075	7	.614581	074
8	.606166	086	8	.610447	086	8	.614686	084
9	.606274	097	9	.610554	096	9	.614792	095

眞數	對數	差	眞數	對數	差	眞數	對數	差 33
No.	Log.	part.	No.	Log.	part.	No.	Log.	part.
4120	.614897	000	4160	.619093	000	4200	.623249	000
1	.615003	011	1	.619198	010	1	.623353	010
2	.615108	021	2	.619302	021	2	.623456	021
3	.615213	031	3	.619406	031	3	.623559	031
4	.615319	042	4	.619511	042	4	.623663	041
5	.615424	052	5	.619615	052	5	.623766	052
6	.615529	063	6	.619719	062	6	.623869	062
7	.615634	073	7	.619823	073	7	.623972	072
8	.615740	084	8	.619928	083	8	.624076	083
9	.615845	095	9	.620032	094	9	.624179	093
4130	.615950	000	4170	.620136	000	4210	.624282	000
1	.616055	011	1	.620240	010	1	.624385	010
2	.616160	021	2	.620344	021	2	.624488	021
3	.616265	031	3	.620448	031	3	.624591	031
4	.616370	042	4	.620552	042	4	.624694	041
5	.616475	052	5	.620656	052	5	.624798	051
6	.616580	063	6	.620760	062	6	.624901	062
7	.616685	073	7	.620864	073	7	.625004	072
8	.616790	084	8	.620968	083	8	.625107	082
9	.616895	095	9	.621072	094	9	.625209	093
4140	.617000	000	4180	.621176	000	4220	.625312	000
1	.617105	010	1	.621280	010	1	.625415	010
2	.617210	021	2	.621384	021	2	.625518	021
3	.617315	031	3	.621488	031	3	.625621	031
4	.617420	042	4	.621592	042	4	.625724	041
5	.617524	052	5	.621695	052	5	.625827	051
6	.617629	063	6	.621799	062	6	.625929	062
7	.617734	073	7	.621903	073	7	.626032	072
8	.617839	084	8	.622007	083	8	.626135	082
9	.617943	094	9	.622110	094	9	.626238	093
4150	.618048	000	4190	.622214	000	4230	.626340	000
1	.618153	010	1	.622318	010	1	.626443	010
2	.618257	021	2	.622421	021	2	.626546	021
3	.618362	031	3	.622525	031	3	.626648	031
4	.618466	042	4	.622628	041	4	.626751	041
5	.618571	052	5	.622732	052	5	.626853	051
6	.618675	062	6	.622835	062	6	.626956	062
7	.618780	073	7	.622939	072	7	.627058	072
8	.618884	083	8	.623042	083	8	.627161	082
9	.618989	094	9	.623146	093	9	.627263	093



眞數	對數	差	眞數	對數	差	眞數	對數	差 34
No.	Log.	part.	No.	Log.	part.	No.	Log.	part.
4240	.627366	000	4280	.631444	000	4320	.635484	000
1	.627468	010	1	.631545	010	1	.635584	010
2	.627571	020	2	.631647	020	2	.635685	020
3	.627673	031	3	.631748	030	3	.635785	030
4	.627775	041	4	.631849	041	4	.635886	040
5	.627878	051	5	.631951	051	5	.635986	050
6	.627980	061	6	.632052	061	6	.636086	060
7	.628082	072	7	.632153	071	7	.636187	070
8	.628184	082	8	.632255	081	8	.636287	080
9	.628287	092	9	.632356	091	9	.636388	090
4250	.628389	000	4290	.632457	000	4330	.636488	000
1	.628491	010	1	.632558	010	1	.636588	010
2	.628593	020	2	.632660	020	2	.636688	020
3	.628695	031	3	.632761	030	3	.636789	030
4	.628797	041	4	.632862	041	4	.636889	040
5	.628900	051	5	.632963	051	5	.636989	050
6	.629002	061	6	.633064	061	6	.637089	060
7	.629104	072	7	.633165	071	7	.637189	070
8	.629206	082	8	.633266	081	8	.637289	080
9	.629308	092	9	.633367	091	9	.637390	090
4260	.629410	000	4300	.633468	000	4340	.637490	000
1	.629511	010	1	.633569	010	1	.637590	010
2	.629613	020	2	.633670	020	2	.637690	020
3	.629715	030	3	.633771	030	3	.637790	030
4	.629817	041	4	.633872	040	4	.637890	040
5	.629919	051	5	.633973	050	5	.637990	050
6	.630021	061	6	.634074	061	6	.638090	060
7	.630123	071	7	.634175	071	7	.638190	070
8	.630224	081	8	.634276	081	8	.638289	080
9	.630326	091	9	.634376	091	9	.638389	090
4270	.630428	000	4310	.634477	000	4350	.638489	000
1	.630530	010	1	.634578	010	1	.638589	010
2	.630631	020	2	.634679	020	2	.638689	020
3	.630733	030	3	.634779	030	3	.638789	030
4	.630834	041	4	.634880	040	4	.638889	040
5	.630936	051	5	.634981	050	5	.638988	050
6	.631038	061	6	.635081	061	6	.639088	060
7	.631139	071	7	.635182	071	7	.639188	070
8	.631241	081	8	.635283	081	8	.639287	080
9	.631342	091	9	.635383	091	9	.639387	090

眞數	對數	差	眞數	對數	差	眞數	對數	差 35
No.	Log.	part.	No.	Log.	part.	No.	Log.	part.
4360	.639486	000	4400	.643453	000	4440	.647383	000
1	.639586	010	1	.643551	010	1	.647481	010
2	.639686	020	2	.643650	020	2	.647579	020
3	.639785	030	3	.643749	030	3	.647676	029
4	.639885	040	4	.643847	039	4	.647774	039
5	.639984	050	5	.643946	049	5	.647872	049
6	.640084	060	6	.644044	059	6	.647969	059
7	.640183	070	7	.644143	069	7	.648067	069
8	.640283	080	8	.644242	079	8	.648165	078
9	.640382	090	9	.644340	089	9	.648262	088
4370	.640481	000	4410	.644439	000	4450	.648360	000
1	.640581	010	1	.644537	010	1	.648458	010
2	.640680	020	2	.644635	020	2	.648555	019
3	.640779	030	3	.644734	030	3	.648653	029
4	.640879	040	4	.644832	039	4	.648750	039
5	.640978	050	5	.644931	049	5	.648848	049
6	.641077	060	6	.645029	059	6	.648945	058
7	.641176	070	7	.645127	069	7	.649043	068
8	.641276	080	8	.645226	079	8	.649140	078
9	.641375	090	9	.645324	089	9	.649237	088
4380	.641474	000	4420	.645422	000	4460	.649335	000
1	.641573	010	1	.645520	010	1	.649432	010
2	.641672	020	2	.645619	020	2	.649530	019
3	.641771	030	3	.645717	030	3	.649627	029
4	.641870	040	4	.645815	039	4	.649724	039
5	.641970	050	5	.645913	049	5	.649821	049
6	.642069	059	6	.646011	059	6	.649919	058
7	.642168	069	7	.646109	069	7	.650016	068
8	.642267	079	8	.646208	079	8	.650113	078
9	.642366	089	9	.646306	089	9	.650210	088
4390	.642464	000	4430	.646404	000	4470	.650307	000
1	.642563	010	1	.646502	010	1	.650405	010
2	.642662	020	2	.646600	020	2	.650502	019
3	.642761	030	3	.646698	029	3	.650599	029
4	.642860	040	4	.646796	039	4	.650696	039
5	.642959	049	5	.646894	049	5	.650793	049
6	.643058	059	6	.646991	059	6	.650890	058
7	.643156	069	7	.647089	069	7	.650987	068
8	.643255	079	8	.647187	078	8	.651084	078
9	.643354	089	9	.647285	088	9	.651181	088



眞數	對數	差	眞數	對數	差	眞數	對數	差 36
No.	Log.	part.	No.	Log.	part.	No.	Log.	part.
4480	.651278	000	4520	.655138	000	4560	.658965	000
1	.651375	010	1	.655234	010	1	.659060	010
2	.651472	019	2	.655331	019	2	.659155	019
3	.651569	029	3	.655427	029	3	.659250	028
4	.651666	038	4	.655523	038	4	.659346	038
5	.651762	048	5	.655619	048	5	.659441	047
6	.651859	058	6	.655714	058	6	.659536	057
7	.651956	067	7	.655810	067	7	.659631	067
8	.652053	077	8	.655906	077	8	.659726	076
9	.652150	087	9	.656002	086	9	.659821	086
4490	.652246	000	4530	.656098	000	4570	.659916	000
1	.652343	010	1	.656194	010	1	.660011	010
2	.652440	019	2	.656290	019	2	.660106	019
3	.652536	029	3	.656386	029	3	.660201	028
4	.652633	038	4	.656481	038	4	.660296	038
5	.652730	048	5	.656577	048	5	.660391	047
6	.652826	058	6	.656673	058	6	.660486	057
7	.652923	067	7	.656769	067	7	.660581	067
8	.653019	077	8	.656864	077	8	.660676	076
9	.653116	087	9	.656960	086	9	.660771	086
4500	.653213	000	4540	.657056	000	4580	.660865	000
1	.653309	010	1	.657151	010	1	.660960	009
2	.653405	019	2	.657247	019	2	.661055	019
3	.653502	029	3	.657343	028	3	.661150	028
4	.653598	038	4	.657438	038	4	.661245	038
5	.653695	048	5	.657534	047	5	.661339	047
6	.653791	058	6	.657629	057	6	.661434	057
7	.653888	067	7	.657725	067	7	.661529	066
8	.653984	077	8	.657820	076	8	.661623	076
9	.654080	087	9	.657916	086	9	.661718	085
4510	.654176	000	4550	.658011	000	4590	.661813	000
1	.654273	010	1	.658107	010	1	.661907	009
2	.654369	019	2	.658202	019	2	.662002	019
3	.654465	029	3	.658298	028	3	.662096	028
4	.654562	038	4	.658393	038	4	.662191	038
5	.654658	048	5	.658488	047	5	.662285	047
6	.654754	058	6	.658584	057	6	.662380	057
7	.654850	067	7	.658679	067	7	.662474	066
8	.654946	077	8	.658774	076	8	.662569	076
9	.655042	086	9	.658870	086	9	.662663	085

眞數	對數	差	眞數	對數	差	眞數	對數	差 37
No.	Log.	part.	No.	Log.	part.	No.	Log.	part.
4600	.662758	000	4640	.666518	000	4680	.670246	000
1	.662852	009	1	.666612	009	1	.670339	009
2	.662947	019	2	.666705	019	2	.670431	018
3	.663041	028	3	.666799	028	3	.670524	028
4	.663135	038	4	.666892	037	4	.670617	037
5	.663230	047	5	.666986	047	5	.670710	046
6	.663324	057	6	.667079	056	6	.670802	055
7	.663418	066	7	.667173	065	7	.670895	064
8	.663512	076	8	.667266	074	8	.670988	074
9	.663607	085	9	.667359	084	9	.671080	083
4610	.663701	000	4650	.667453	000	4690	.671173	000
1	.663795	009	1	.667546	009	1	.671265	009
2	.663889	019	2	.667640	019	2	.671358	018
3	.663983	028	3	.667733	028	3	.671451	028
4	.664078	038	4	.667826	037	4	.671543	037
5	.664172	047	5	.667920	047	5	.671636	046
6	.664266	056	6	.668013	056	6	.671728	055
7	.664360	066	7	.668106	065	7	.671821	064
8	.664454	075	8	.668199	074	8	.671913	074
9	.664548	085	9	.668293	084	9	.672005	083
4620	.664642	000	4660	.668386	000	4700	.672098	000
1	.664736	009	1	.668479	009	1	.672190	009
2	.664830	019	2	.668572	019	2	.672283	018
3	.664924	028	3	.668665	028	3	.672375	028
4	.665018	038	4	.668758	037	4	.672467	037
5	.665112	047	5	.668852	047	5	.672560	046
6	.665206	056	6	.668945	056	6	.672652	055
7	.665299	066	7	.669038	065	7	.672744	064
8	.665393	075	8	.669131	074	8	.672836	074
9	.665487	085	9	.669224	084	9	.672929	083
4630	.665581	000	4670	.669317	000	4710	.673021	000
1	.665675	009	1	.669410	009	1	.673113	009
2	.665769	019	2	.669503	019	2	.673205	018
3	.665862	028	3	.669596	028	3	.673297	028
4	.665956	038	4	.669689	037	4	.673390	037
5	.666050	047	5	.669782	047	5	.673482	046
6	.666143	056	6	.669875	056	6	.673574	055
7	.666237	066	7	.669967	065	7	.673666	064
8	.666331	075	8	.670060	074	8	.673758	074
9	.666424	085	9	.670153	084	9	.673850	083



眞數	對數	差	眞數	對數	差	眞數	對數	差 38
No.	Log.	part.	No.	Log.	part.	No.	Log.	part.
4720	.673942	000	4760	.677607	000	4800	.681241	000
1	.674034	009	1	.677698	009	1	.681332	009
2	.674126	018	2	.677789	018	2	.681422	018
3	.674218	028	3	.677881	027	3	.681513	027
4	.674310	037	4	.677972	036	4	.681603	036
5	.674402	046	5	.678063	045	5	.681693	045
6	.674494	055	6	.678154	055	6	.681784	054
7	.674586	064	7	.678245	064	7	.681874	063
8	.674677	074	8	.678336	073	8	.681964	072
9	.674769	083	9	.678427	082	9	.682055	081
4730	.674861	000	4770	.678518	000	4810	.682145	000
1	.674953	009	1	.678609	009	1	.682235	009
2	.675045	018	2	.678700	018	2	.682326	018
3	.675136	028	3	.678791	027	3	.682416	027
4	.675228	037	4	.678882	036	4	.682506	036
5	.675320	046	5	.678973	045	5	.682596	045
6	.675412	055	6	.679064	055	6	.682686	054
7	.675503	064	7	.679155	064	7	.682777	063
8	.675595	074	8	.679246	073	8	.682867	072
9	.675687	083	9	.679337	082	9	.682957	081
4740	.675778	000	4780	.679428	000	4820	.683047	000
1	.675870	009	1	.679519	009	1	.683137	009
2	.675961	018	2	.679610	018	2	.683227	018
3	.676053	027	3	.679700	027	3	.683317	027
4	.676145	036	4	.679791	036	4	.683407	036
5	.676236	046	5	.679882	045	5	.683497	045
6	.676328	055	6	.679973	055	6	.683587	054
7	.676419	064	7	.680063	064	7	.683677	063
8	.676511	073	8	.680154	073	8	.683767	072
9	.676602	082	9	.680245	082	9	.683857	081
4750	.676694	000	4790	.680335	000	4830	.683947	000
1	.676785	009	1	.680426	009	1	.684037	009
2	.676876	018	2	.680517	018	2	.684127	018
3	.676968	027	3	.680607	027	3	.684217	027
4	.677059	036	4	.680698	036	4	.684307	036
5	.677150	046	5	.680789	045	5	.684396	045
6	.677242	055	6	.680879	055	6	.684486	054
7	.677333	064	7	.680970	064	7	.684576	063
8	.677424	073	8	.681060	073	8	.684666	072
9	.677516	082	9	.681151	082	9	.684756	081

眞數	對數	差	眞數	對數	差	眞數	對數	差 39
No.	Log.	part.	No.	Log.	part.	No.	Log.	part.
4840	.684845	000	4880	.688420	000	4920	.691965	000
1	.684935	009	1	.688509	009	1	.692053	009
2	.685025	018	2	.688598	018	2	.692142	018
3	.685114	027	3	.688687	027	3	.692230	027
4	.685204	036	4	.688776	036	4	.692318	035
5	.685294	045	5	.688865	045	5	.692406	044
6	.685383	054	6	.688953	054	6	.692494	053
7	.685473	063	7	.689042	062	7	.692583	062
8	.685563	072	8	.689131	072	8	.692671	071
9	.685652	081	9	.689220	080	9	.692759	080
4850	.685742	000	4890	.689309	000	4930	.692847	000
1	.685831	009	1	.689398	009	1	.692935	009
2	.685921	018	2	.689486	018	2	.693023	018
3	.686010	027	3	.689575	027	3	.693111	026
4	.686100	036	4	.689664	036	4	.693199	035
5	.686189	045	5	.689753	045	5	.693287	044
6	.686279	054	6	.689841	054	6	.693375	053
7	.686368	063	7	.689930	062	7	.693463	062
8	.686457	072	8	.690019	072	8	.693551	070
9	.686547	081	9	.690107	080	9	.693639	079
4860	.686636	000	4900	.690196	000	4940	.693727	000
1	.686726	009	1	.690285	009	1	.693815	009
2	.686815	018	2	.690373	018	2	.693903	018
3	.686904	027	3	.690462	027	3	.693991	026
4	.686994	036	4	.690550	035	4	.694078	035
5	.687083	045	5	.690639	044	5	.694166	044
6	.687172	054	6	.690727	053	6	.694254	053
7	.687261	063	7	.690816	062	7	.694342	062
8	.687351	072	8	.690905	071	8	.694430	070
9	.687440	081	9	.690993	080	9	.694517	079
4870	.687529	000	4910	.691081	000	4950	.694605	000
1	.687618	009	1	.691170	009	1	.694693	009
2	.687707	018	2	.691258	018	2	.694781	018
3	.687796	027	3	.691347	027	3	.694868	026
4	.687885	036	4	.691435	035	4	.694956	035
5	.687975	045	5	.691523	044	5	.695044	044
6	.688064	054	6	.691612	053	6	.695131	053
7	.688153	062	7	.691700	062	7	.695219	062
8	.688242	072	8	.691788	071	8	.695306	070
9	.688331	080	9	.691877	080	9	.695394	079



眞數	對數	差	眞數	對數	差	眞數	對數	差 40
No.	Log.	part.	No.	Log.	part.	No.	Log.	part.
4960	.695482	00	5000	.698970	00	5040	.702430	00
1	.695569	09	1	.699057	09	1	.702517	09
2	.695657	17	2	.699144	17	2	.702603	17
3	.695744	26	3	.699230	26	3	.702689	26
4	.695832	35	4	.699317	35	4	.702775	34
5	.695919	44	5	.699404	43	5	.702861	43
6	.696007	52	6	.699491	52	6	.702947	52
7	.696094	61	7	.699578	61	7	.703033	60
8	.696182	70	8	.699664	70	8	.703119	69
9	.696269	79	9	.699751	78	9	.703205	77
4970	.696356	00	5010	.699838	00	5050	.703291	00
1	.696444	09	1	.699924	09	1	.703377	09
2	.696531	17	2	.700011	17	2	.703463	17
3	.696618	26	3	.700098	26	3	.703549	26
4	.696706	35	4	.700184	35	4	.703635	34
5	.696793	44	5	.700271	43	5	.703721	43
6	.696880	52	6	.700357	52	6	.703807	52
7	.696968	61	7	.700444	61	7	.703893	60
8	.697055	70	8	.700531	70	8	.703979	69
9	.697142	79	9	.700617	78	9	.704065	77
4980	.697229	00	5020	.700704	00	5060	.704150	00
1	.697316	09	1	.700790	09	1	.704236	09
2	.697404	17	2	.700877	17	2	.704322	17
3	.697491	26	3	.700963	26	3	.704408	26
4	.697578	35	4	.701050	35	4	.704494	34
5	.697665	44	5	.701136	43	5	.704579	43
6	.697752	52	6	.701222	52	6	.704665	52
7	.697839	61	7	.701309	61	7	.704751	60
8	.697926	70	8	.701395	70	8	.704837	69
9	.698013	79	9	.701482	78	9	.704922	77
4990	.698100	00	5030	.701568	00	5070	.705008	00
1	.698188	09	1	.701654	09	1	.705094	09
2	.698275	17	2	.701741	17	2	.705179	17
3	.698362	26	3	.701827	26	3	.705265	26
4	.698448	35	4	.701913	35	4	.705350	34
5	.698535	44	5	.701999	43	5	.705436	43
6	.698622	52	6	.702086	52	6	.705522	52
7	.698709	61	7	.702172	61	7	.705607	60
8	.698796	70	8	.702258	70	8	.705693	69
9	.698883	79	9	.702344	78	9	.705778	77

眞數	對數	差	眞數	對數	差	眞數	對數	差 41
No.	Log.	part.	No.	Log.	part.	No.	Log.	part.
5080	.705864	00	5120	.709270	00	5160	.712650	00
1	.705949	09	1	.709355	08	1	.712734	08
2	.706035	17	2	.709440	17	2	.712818	17
3	.706120	26	3	.709524	25	3	.712902	25
4	.706205	34	4	.709609	34	4	.712986	34
5	.706291	43	5	.709694	42	5	.713070	42
6	.706376	51	6	.709779	51	6	.713154	50
7	.706462	60	7	.709863	59	7	.713238	59
8	.706547	68	8	.709948	68	8	.713322	67
9	.706632	77	9	.710033	76	9	.713406	76
5090	.706718	00	5130	.710117	00	5170	.713490	00
1	.706803	09	1	.710202	08	1	.713574	08
2	.706888	17	2	.710287	17	2	.713658	17
3	.706974	26	3	.710371	25	3	.713742	25
4	.707059	34	4	.710456	34	4	.713826	34
5	.707144	43	5	.710540	42	5	.713910	42
6	.707229	51	6	.710625	51	6	.713994	50
7	.707315	60	7	.710710	59	7	.714078	59
8	.707400	68	8	.710794	68	8	.714162	67
9	.707485	77	9	.710879	76	9	.714246	76
5100	.707570	00	5140	.710963	00	5180	.714330	00
1	.707655	09	1	.711048	08	1	.714414	08
2	.707740	17	2	.711132	17	2	.714497	17
3	.707826	26	3	.711216	25	3	.714581	25
4	.707911	34	4	.711301	34	4	.714665	34
5	.707996	43	5	.711385	42	5	.714749	42
6	.708081	51	6	.711470	51	6	.714832	50
7	.708166	60	7	.711554	59	7	.714916	59
8	.708251	68	8	.711638	68	8	.715000	67
9	.708336	77	9	.711723	76	9	.715084	76
5110	.708421	00	5150	.711807	00	5190	.715167	00
1	.708506	09	1	.711891	08	1	.715251	08
2	.708591	17	2	.711976	17	2	.715335	17
3	.708676	26	3	.712060	25	3	.715418	25
4	.708761	34	4	.712144	34	4	.715502	34
5	.708846	43	5	.712229	42	5	.715586	42
6	.708931	51	6	.712313	51	6	.715669	50
7	.709015	60	7	.712397	59	7	.715753	59
8	.709100	68	8	.712481	68	8	.715836	67
9	.709185	77	9	.712565	76	9	.715920	76



眞數	對數	差	眞數	對數	差	眞數	對數	差
No.	Log.	part.	No.	Log.	part.	No.	Log.	part.
5200	.716003	00	5240	.719331	00	5280	.722634	00
1	.716087	08	1	.719414	08	1	.722716	08
2	.716170	17	2	.719497	17	2	.722798	16
3	.716254	25	3	.719580	25	3	.722881	25
4	.716337	34	4	.719663	33	4	.722963	33
5	.716421	42	5	.719745	41	5	.723045	41
6	.716504	50	6	.719828	50	6	.723127	49
7	.716588	59	7	.719911	58	7	.723209	58
8	.716671	67	8	.719994	66	8	.723291	66
9	.716754	76	9	.720077	75	9	.723374	74
5210	.716838	00	5250	.720159	00	5290	.723456	00
1	.716921	08	1	.720242	08	1	.723538	08
2	.717004	17	2	.720325	17	2	.723620	16
3	.717088	25	3	.720407	25	3	.723702	25
4	.717171	33	4	.720490	33	4	.723784	33
5	.717254	42	5	.720573	41	5	.723866	41
6	.717338	50	6	.720655	50	6	.723948	49
7	.717421	58	7	.720738	58	7	.724030	57
8	.717504	66	8	.720821	66	8	.724112	66
9	.717587	75	9	.720903	75	9	.724194	74
5220	.717670	00	5260	.720986	00	5300	.724276	00
1	.717754	08	1	.721068	08	1	.724358	08
2	.717837	17	2	.721151	16	2	.724440	16
3	.717920	25	3	.721233	25	3	.724522	25
4	.718003	33	4	.721316	33	4	.724603	33
5	.718086	42	5	.721398	41	5	.724685	41
6	.718169	50	6	.721481	49	6	.724767	49
7	.718252	58	7	.721563	58	7	.724849	57
8	.718336	66	8	.721646	66	8	.724931	66
9	.718419	75	9	.721728	74	9	.725013	74
5230	.718502	00	5270	.721811	00	5310	.725094	00
1	.718585	08	1	.721893	08	1	.725176	08
2	.718668	17	2	.721975	16	2	.725258	16
3	.718751	25	3	.722058	25	3	.725340	25
4	.718834	33	4	.722140	33	4	.725422	33
5	.718917	42	5	.722222	41	5	.725503	41
6	.719000	50	6	.722305	49	6	.725585	49
7	.719083	58	7	.722387	58	7	.725667	57
8	.719165	66	8	.722469	66	8	.725748	66
9	.719248	75	9	.722552	74	9	.725830	74

眞數	對數	差	眞數	對數	差	眞數	對數	差
No.	Log.	part.	No.	Log.	part.	No.	Log.	part.
5320	.725912	00	5360	.729165	00	5400	.732394	00
1	.725993	08	1	.729246	08	1	.732474	08
2	.726075	16	2	.729327	16	2	.732555	16
3	.726156	24	3	.729408	24	3	.732635	24
4	.726238	33	4	.729489	32	4	.732715	32
5	.726320	41	5	.729570	41	5	.732796	40
6	.726401	49	6	.729651	49	6	.732876	48
7	.726483	57	7	.729732	57	7	.732956	56
8	.726564	65	8	.729812	65	8	.733037	64
9	.726646	73	9	.729893	73	9	.733117	72
5330	.726727	00	5370	.729974	00	5410	.733197	00
1	.726809	08	1	.730055	08	1	.733277	08
2	.726890	16	2	.730136	16	2	.733358	16
3	.726972	24	3	.730217	24	3	.733438	24
4	.727053	33	4	.730298	32	4	.733518	32
5	.727134	41	5	.730378	40	5	.733598	40
6	.727216	49	6	.730459	49	6	.733679	48
7	.727297	57	7	.730540	57	7	.733759	56
8	.727379	65	8	.730621	65	8	.733839	64
9	.727460	73	9	.730701	73	9	.733919	72
5340	.727541	00	5380	.730782	00	5420	.733999	00
1	.727623	08	1	.730863	08	1	.734079	08
2	.727704	16	2	.730944	16	2	.734159	16
3	.727785	24	3	.731024	24	3	.734240	24
4	.727866	33	4	.731105	32	4	.734320	32
5	.727948	41	5	.731186	40	5	.734400	40
6	.728029	49	6	.731266	49	6	.734480	48
7	.728110	57	7	.731347	57	7	.734560	56
8	.728191	65	8	.731428	65	8	.734640	64
9	.728273	73	9	.731508	73	9	.734720	72
5350	.728354	00	5390	.731589	00	5430	.734800	00
1	.728435	08	1	.731669	08	1	.734880	08
2	.728516	16	2	.731750	16	2	.734960	16
3	.728597	24	3	.731830	24	3	.735040	24
4	.728678	33	4	.731911	32	4	.735120	32
5	.728759	41	5	.731991	40	5	.735200	40
6	.728841	49	6	.732072	48	6	.735279	48
7	.728922	57	7	.732152	56	7	.735359	56
8	.729003	65	8	.732233	64	8	.735439	64
9	.729084	73	9	.732313	72	9	.735519	72



眞數	對數	差	眞數	對數	差	眞數	對數	差 44
No.	Log.	part.	No.	Log.	part.	No.	Log.	part.
5440	.735599	00	5480	.738781	00	5520	.741939	00
1	.735679	08	1	.738860	08	1	.742018	08
2	.735758	16	2	.738939	16	2	.742096	16
3	.735838	24	3	.739018	24	3	.742175	23
4	.735918	32	4	.739097	32	4	.742254	31
5	.735998	40	5	.739177	40	5	.742332	39
6	.736078	48	6	.739256	47	6	.742411	47
7	.736157	56	7	.739335	55	7	.742489	55
8	.736237	64	8	.739414	63	8	.742568	63
9	.736317	72	9	.739493	71	9	.742647	71
5450	.736396	00	5490	.739572	00	5530	.742725	00
1	.736476	08	1	.739651	08	1	.742804	08
2	.736556	16	2	.739730	16	2	.742882	16
3	.736635	24	3	.739810	24	3	.742961	23
4	.736715	32	4	.739889	32	4	.743039	31
5	.736795	40	5	.739968	40	5	.743118	39
6	.736874	48	6	.740047	47	6	.743196	47
7	.736954	56	7	.740126	55	7	.743274	55
8	.737033	64	8	.740205	63	8	.743353	63
9	.737113	72	9	.740284	71	9	.743431	71
5460	.737193	00	5500	.740363	00	5540	.743510	00
1	.737272	08	1	.740442	08	1	.743588	08
2	.737352	16	2	.740521	16	2	.743666	16
3	.737431	24	3	.740599	24	3	.743745	23
4	.737511	32	4	.740678	32	4	.743823	31
5	.737590	40	5	.740757	40	5	.743902	39
6	.737670	48	6	.740836	47	6	.743980	47
7	.737749	56	7	.740915	55	7	.744058	55
8	.737828	64	8	.740994	63	8	.744136	63
9	.737908	72	9	.741073	71	9	.744215	71
5470	.737987	00	5510	.741152	00	5550	.744293	00
1	.738067	08	1	.741230	08	1	.744371	08
2	.738146	16	2	.741309	16	2	.744449	16
3	.738225	24	3	.741388	24	3	.744528	23
4	.738305	32	4	.741467	32	4	.744606	31
5	.738384	40	5	.741545	40	5	.744684	39
6	.738463	48	6	.741624	47	6	.744762	47
7	.738543	56	7	.741703	55	7	.744840	55
8	.738622	64	8	.741782	63	8	.744918	63
9	.738701	72	9	.741860	71	9	.744997	71

眞數	對數	差	眞數	對數	差	眞數	對數	差 45
No.	Log.	part.	No.	Log.	part.	No.	Log.	part.
5560	.745075	00	5600	.748188	00	5640	.751279	00
1	.745153	08	1	.748266	08	1	.751356	08
2	.745231	16	2	.748343	16	2	.751433	15
3	.745309	23	3	.748421	23	3	.751510	23
4	.745387	31	4	.748498	31	4	.751587	30
5	.745465	39	5	.748576	39	5	.751664	38
6	.745543	47	6	.748653	47	6	.751741	46
7	.745621	55	7	.748731	54	7	.751818	54
8	.745699	62	8	.748808	62	8	.751895	62
9	.745777	70	9	.748885	70	9	.751972	70
5570	.745855	00	5610	.748963	00	5650	.752048	00
1	.745933	08	1	.749040	08	1	.752125	08
2	.746011	16	2	.749118	16	2	.752202	15
3	.746089	23	3	.749195	23	3	.752279	23
4	.746167	31	4	.749272	31	4	.752356	30
5	.746245	39	5	.749350	39	5	.752433	38
6	.746323	47	6	.749427	47	6	.752509	46
7	.746401	55	7	.749504	54	7	.752586	54
8	.746478	62	8	.749582	62	8	.752663	62
9	.746556	70	9	.749659	70	9	.752740	70
5580	.746634	00	5620	.749736	00	5660	.752816	00
1	.746712	08	1	.749814	08	1	.752893	08
2	.746790	16	2	.749891	16	2	.752970	15
3	.746868	23	3	.749968	23	3	.753047	23
4	.746945	31	4	.750045	31	4	.753123	30
5	.747023	39	5	.750122	39	5	.753200	38
6	.747101	47	6	.750200	47	6	.753277	46
7	.747179	55	7	.750277	54	7	.753353	54
8	.747256	62	8	.750354	62	8	.753430	62
9	.747334	70	9	.750431	70	9	.753506	70
5590	.747412	00	5630	.750508	00	5670	.753583	00
1	.747489	08	1	.750585	08	1	.753660	08
2	.747567	16	2	.750663	16	2	.753738	15
3	.747645	23	3	.750740	23	3	.753813	23
4	.747722	31	4	.750817	31	4	.753889	30
5	.747800	39	5	.750894	39	5	.753966	38
6	.747878	47	6	.750971	47	6	.754042	46
7	.747955	54	7	.751048	54	7	.754119	54
8	.748033	62	8	.751125	62	8	.754195	62
9	.748110	70	9	.751202	70	9	.754272	70



眞數	對數	差	眞數	對數	差	眞數	對數	差
No.	Log.	part.	No.	Log.	part.	No.	Log.	part.
5680	.754348	00	5720	.757396	00	5760	.760422	00
1	.754425	08	1	.757472	08	1	.760498	08
2	.754501	15	2	.757548	15	2	.760573	15
3	.754578	23	3	.757624	23	3	.760649	23
4	.754654	30	4	.757700	30	4	.760724	30
5	.754730	38	5	.757775	38	5	.760799	38
6	.754807	46	6	.757851	46	6	.760875	45
7	.754883	53	7	.757927	53	7	.760950	53
8	.754960	61	8	.758003	61	8	.761025	60
9	.755036	69	9	.758079	68	9	.761100	68
5690	.755112	00	5730	.758155	00	5770	.761176	00
1	.755189	08	1	.758230	08	1	.761251	08
2	.755265	15	2	.758306	15	2	.761326	15
3	.755341	23	3	.758382	23	3	.761402	23
4	.755417	30	4	.758458	30	4	.761477	30
5	.755494	38	5	.758533	38	5	.761552	38
6	.755570	46	6	.758609	46	6	.761627	45
7	.755646	53	7	.758685	53	7	.761702	53
8	.755722	61	8	.758760	61	8	.761777	60
9	.755799	69	9	.758836	68	9	.761853	68
5700	.755875	00	5740	.758912	00	5780	.761928	00
1	.755951	08	1	.758987	08	1	.762003	08
2	.756027	15	2	.759063	15	2	.762078	15
3	.756103	23	3	.759139	23	3	.762153	22
4	.756179	30	4	.759214	30	4	.762228	30
5	.756256	38	5	.759290	38	5	.762303	38
6	.756332	46	6	.759366	45	6	.762378	45
7	.756408	53	7	.759441	53	7	.762453	52
8	.756484	61	8	.759517	60	8	.762528	60
9	.756560	69	9	.759592	68	9	.762603	68
5710	.756636	00	5750	.759638	00	5790	.762679	00
1	.756712	08	1	.759713	08	1	.762754	08
2	.756788	15	2	.759789	15	2	.762829	15
3	.756864	23	3	.759864	23	3	.762903	22
4	.756940	30	4	.759970	30	4	.762978	30
5	.757016	38	5	.760045	38	5	.763053	38
6	.757092	46	6	.760121	45	6	.763128	45
7	.757168	53	7	.760196	53	7	.763203	52
8	.757244	61	8	.760272	60	8	.763278	60
9	.757320	69	9	.760347	68	9	.763353	68

眞數	對數	差	眞數	對數	差	眞數	對數	差
No.	Log.	part.	No.	Log.	part.	No.	Log.	part.
5800	.763428	00	5840	.766413	00	5880	.769377	00
1	.763503	07	1	.766487	07	1	.769451	07
2	.763578	15	2	.766562	15	2	.769525	15
3	.763653	22	3	.766636	22	3	.769599	22
4	.763727	30	4	.766710	30	4	.769673	30
5	.763802	37	5	.766784	37	5	.769746	37
6	.763877	45	6	.766859	45	6	.769820	45
7	.763952	52	7	.766933	52	7	.769894	52
8	.764027	60	8	.767007	60	8	.769968	59
9	.764101	67	9	.767082	67	9	.770042	67
5810	.764176	00	5850	.767156	00	5890	.770115	00
1	.764251	07	1	.767230	07	1	.770189	07
2	.764326	15	2	.767304	15	2	.770263	15
3	.764400	22	3	.767378	22	3	.770336	22
4	.764475	30	4	.767453	30	4	.770410	30
5	.764550	37	5	.767527	37	5	.770484	37
6	.764624	45	6	.767601	45	6	.770557	45
7	.764699	52	7	.767675	52	7	.770631	52
8	.764774	60	8	.767749	59	8	.770705	59
9	.764848	67	9	.767823	67	9	.770778	67
5820	.764923	00	5860	.767898	00	5900	.770852	00
1	.764998	07	1	.767972	07	1	.770926	07
2	.765072	15	2	.768046	15	2	.770999	15
3	.765147	22	3	.768120	22	3	.771073	22
4	.765221	30	4	.768194	30	4	.771146	30
5	.765296	37	5	.768268	37	5	.771220	37
6	.765370	45	6	.768342	45	6	.771293	45
7	.765445	52	7	.768416	52	7	.771367	52
8	.765519	60	8	.768490	59	8	.771440	59
9	.765594	67	9	.768564	67	9	.771514	67
5830	.765669	00	5870	.768638	00	5910	.771587	00
1	.765743	07	1	.768712	07	1	.771661	07
2	.765817	15	2	.768786	15	2	.771734	15
3	.765892	22	3	.768860	22	3	.771808	22
4	.765966	30	4	.768934	30	4	.771881	30
5	.766041	37	5	.769008	37	5	.771955	37
6	.766115	45	6	.769082	45	6	.772028	44
7	.766190	52	7	.769156	52	7	.772102	52
8	.766264	60	8	.769230	59	8	.772175	59
9	.766338	67	9	.769303	67	9	.772248	67



眞數	對數	差	眞數	對數	差	眞數	對數	差 48
No.	Log.	part.	No.	Log.	part.	No.	Log.	part.
5920	.772322	00	5960	.775246	00	6000	.778151	00
1	.772395	07	1	.775319	07	1	.778224	07
2	.772468	15	2	.775392	15	2	.778296	14
3	.772542	22	3	.775465	22	3	.778368	22
4	.772615	29	4	.775538	29	4	.778441	29
5	.772688	37	5	.775610	37	5	.778513	36
6	.772762	44	6	.775683	44	6	.778585	43
7	.772835	51	7	.775756	51	7	.778658	51
8	.772908	59	8	.775829	59	8	.778730	58
9	.772981	66	9	.775902	66	9	.778802	65
5930	.773055	00	5970	.775974	00	6010	.778874	00
1	.773128	07	1	.776047	07	1	.778947	07
2	.773201	15	2	.776120	15	2	.779019	14
3	.773274	22	3	.776192	22	3	.779091	22
4	.773347	29	4	.776265	29	4	.779163	29
5	.773421	37	5	.776338	37	5	.779236	36
6	.773494	44	6	.776411	44	6	.779308	43
7	.773567	51	7	.776483	51	7	.779380	51
8	.773640	59	8	.776556	59	8	.779452	58
9	.773713	66	9	.776629	66	9	.779524	65
5940	.773786	00	5980	.776701	00	6020	.779596	00
1	.773860	07	1	.776774	07	1	.779669	07
2	.773933	15	2	.776846	14	2	.779741	14
3	.774006	22	3	.776919	22	3	.779813	22
4	.774079	29	4	.776992	29	4	.779885	29
5	.774152	37	5	.777064	36	5	.779957	36
6	.774225	44	6	.777137	43	6	.780029	43
7	.774298	51	7	.777209	51	7	.780101	50
8	.774371	59	8	.777282	58	8	.780173	58
9	.774444	66	9	.777354	65	9	.780245	65
5950	.774517	00	5990	.777427	00	6030	.780317	00
1	.774590	07	1	.777499	07	1	.780389	07
2	.774663	15	2	.777572	14	2	.780461	14
3	.774736	22	3	.777644	22	3	.780533	22
4	.774809	29	4	.777717	29	4	.780605	29
5	.774882	37	5	.777789	36	5	.780677	36
6	.774955	44	6	.777862	43	6	.780749	43
7	.775028	51	7	.777934	51	7	.780821	50
8	.775100	59	8	.778006	58	8	.780893	58
9	.775173	66	9	.778079	65	9	.780965	65

眞數	對數	差	眞數	對數	差	眞數	對數	差 49
No.	Log.	part.	No.	Log.	part.	No.	Log.	part.
6040	.781037	00	6080	.783904	00	6120	.786751	00
1	.781109	07	1	.783975	07	1	.786822	07
2	.781181	14	2	.784046	14	2	.786893	14
3	.781253	22	3	.784118	21	3	.786964	21
4	.781324	29	4	.784189	29	4	.787035	28
5	.781396	36	5	.784261	36	5	.787106	36
6	.781468	43	6	.784332	43	6	.787177	43
7	.781540	50	7	.784403	50	7	.787248	50
8	.781612	58	8	.784475	57	8	.787319	57
9	.781684	65	9	.784546	64	9	.787390	64
6050	.781755	00	6090	.784617	00	6130	.787460	00
1	.781827	07	1	.784689	07	1	.787531	07
2	.781899	14	2	.784760	14	2	.787602	14
3	.781971	22	3	.784831	21	3	.787673	21
4	.782042	29	4	.784902	29	4	.787744	28
5	.782114	36	5	.784974	36	5	.787815	35
6	.782186	43	6	.785045	43	6	.787885	42
7	.782258	50	7	.785116	50	7	.787956	49
8	.782329	58	8	.785187	57	8	.788027	56
9	.782401	65	9	.785259	64	9	.788098	63
6060	.782473	00	6100	.785330	00	6140	.788168	00
1	.782544	07	1	.785401	07	1	.788239	07
2	.782616	14	2	.785472	14	2	.788310	14
3	.782688	21	3	.785543	21	3	.788380	21
4	.782759	29	4	.785614	28	4	.788451	28
5	.782831	36	5	.785686	36	5	.788522	35
6	.782902	43	6	.785757	43	6	.788593	42
7	.782974	50	7	.785828	50	7	.788663	49
8	.783046	57	8	.785899	57	8	.788734	56
9	.783117	64	9	.785970	64	9	.788804	63
6070	.783189	00	6110	.786041	00	6150	.788875	00
1	.783260	07	1	.786112	07	1	.788946	07
2	.783332	14	2	.786183	14	2	.789016	14
3	.783403	21	3	.786254	21	3	.789087	21
4	.783475	29	4	.786325	28	4	.789157	28
5	.783546	36	5	.786396	36	5	.789228	35
6	.783618	43	6	.786467	43	6	.789299	42
7	.783689	50	7	.786538	50	7	.789369	49
8	.783761	57	8	.786609	57	8	.789440	56
9	.783832	64	9	.786680	64	9	.789510	63



眞數	對數	差	眞數	對數	差	眞數	對數	差 50
No.	Log.	part.	No.	Log.	part.	No.	Log.	part.
6160	.789581	00	6200	.792392	00	6240	.795185	00
1	.789651	07	1	.792462	07	1	.795254	07
2	.789722	14	2	.792532	14	2	.795324	14
3	.789792	21	3	.792602	21	3	.795393	21
4	.789863	28	4	.792672	28	4	.795463	28
5	.789933	35	5	.792742	35	5	.795532	35
6	.790003	42	6	.792812	42	6	.795602	42
7	.790074	49	7	.792882	49	7	.795671	49
8	.790144	56	8	.792952	56	8	.795741	56
9	.790215	63	9	.793022	63	9	.795810	63
6170	.790285	00	6210	.793092	00	6250	.795880	00
1	.790355	07	1	.793161	07	1	.795949	07
2	.790426	14	2	.793231	14	2	.796019	14
3	.790496	21	3	.793301	21	3	.796088	21
4	.790567	28	4	.793371	28	4	.796158	28
5	.790637	35	5	.793441	35	5	.796227	35
6	.790707	42	6	.793511	42	6	.796297	42
7	.790778	49	7	.793581	49	7	.796366	49
8	.790848	56	8	.793651	56	8	.796436	56
9	.790918	63	9	.793721	63	9	.796505	63
6180	.790988	00	6220	.793790	00	6260	.796574	00
1	.791059	07	1	.793860	07	1	.796644	07
2	.791129	14	2	.793930	14	2	.796713	14
3	.791199	21	3	.794000	21	3	.796782	21
4	.791269	28	4	.794070	28	4	.796852	27
5	.791340	35	5	.794139	35	5	.796921	35
6	.791410	42	6	.794209	42	6	.796990	42
7	.791480	49	7	.794279	49	7	.797060	49
8	.791550	56	8	.794349	56	8	.797129	56
9	.791620	63	9	.794418	63	9	.797198	62
6190	.791691	00	6230	.794488	00	6270	.797267	00
1	.791761	07	1	.794558	07	1	.797337	07
2	.791831	14	2	.794627	14	2	.797406	14
3	.791901	21	3	.794697	21	3	.797475	21
4	.791971	28	4	.794767	28	4	.797544	27
5	.792041	35	5	.794836	35	5	.797614	35
6	.792111	42	6	.794906	42	6	.797683	42
7	.792181	49	7	.794976	49	7	.797752	49
8	.792252	56	8	.795045	56	8	.797821	56
9	.792322	63	9	.795115	63	9	.797890	62

眞數	對數	差	眞數	對數	差	眞數	對數	差 51
No.	Log.	part.	No.	Log.	part.	No.	Log.	part.
6280	.797960	00	6320	.800717	00	6360	.803457	00
1	.798029	07	1	.800786	07	1	.803525	07
2	.798098	14	2	.800854	14	2	.803594	14
3	.798167	21	3	.800923	21	3	.803662	21
4	.798236	28	4	.800992	28	4	.803730	27
5	.798305	34	5	.801060	34	5	.803798	34
6	.798374	41	6	.801129	41	6	.803867	41
7	.798443	48	7	.801198	48	7	.803935	48
8	.798512	55	8	.801266	55	8	.804003	55
9	.798582	62	9	.801335	62	9	.804071	62
6290	.798651	00	6330	.801404	00	6370	.804139	00
1	.798720	07	1	.801472	07	1	.804208	07
2	.798789	14	2	.801541	14	2	.804276	14
3	.798858	21	3	.801609	21	3	.804344	21
4	.798927	28	4	.801678	27	4	.804412	27
5	.798996	34	5	.801747	34	5	.804480	34
6	.799065	41	6	.801815	41	6	.804548	41
7	.799134	48	7	.801884	48	7	.804616	48
8	.799203	55	8	.801952	55	8	.804684	55
9	.799272	62	9	.802021	62	9	.804753	62
6300	.799340	00	6340	.802089	00	6380	.804821	00
1	.799409	07	1	.802158	07	1	.804889	07
2	.799478	14	2	.802226	14	2	.804957	14
3	.799547	21	3	.802295	21	3	.805025	20
4	.799616	28	4	.802363	27	4	.805093	27
5	.799685	34	5	.802432	34	5	.805161	34
6	.799754	41	6	.802500	41	6	.805229	41
7	.799823	48	7	.802568	48	7	.805297	48
8	.799892	55	8	.802637	55	8	.805365	54
9	.799960	62	9	.802705	62	9	.805433	61
6310	.800029	00	6350	.802774	00	6390	.805501	00
1	.800098	07	1	.802842	07	1	.805569	07
2	.800167	14	2	.802910	14	2	.805637	14
3	.800236	21	3	.802979	21	3	.805705	20
4	.800305	28	4	.803047	27	4	.805773	27
5	.800373	34	5	.803116	34	5	.805840	34
6	.800442	41	6	.803184	41	6	.805908	41
7	.800511	48	7	.803252	48	7	.805976	48
8	.800580	55	8	.803320	55	8	.806044	54
9	.800648	62	9	.803389	62	9	.806112	61



眞數	對數	差	眞數	對數	差	眞數	對數	差 52
No.	Log.	part.	No.	Log.	part.	No.	Log.	part.
6400	.806180	00	6440	.808886	00	6480	.811575	00
1	.806248	07	1	.808953	07	1	.811642	07
2	.806316	14	2	.809021	13	2	.811709	13
3	.806383	20	3	.809088	20	3	.811776	20
4	.806451	27	4	.809155	27	4	.811843	27
5	.806519	34	5	.809223	34	5	.811910	33
6	.806587	41	6	.809290	40	6	.811977	40
7	.806655	48	7	.809358	47	7	.812044	47
8	.806722	54	8	.809425	54	8	.812111	54
9	.806790	61	9	.809492	61	9	.812178	60
6410	.806858	00	6450	.809560	00	6490	.812245	00
1	.806926	07	1	.809627	07	1	.812312	07
2	.806993	14	2	.809694	13	2	.812378	13
3	.807061	20	3	.809762	20	3	.812445	20
4	.807129	27	4	.809829	27	4	.812512	27
5	.807197	34	5	.809896	34	5	.812579	33
6	.807264	41	6	.809963	40	6	.812646	40
7	.807332	48	7	.810031	47	7	.812713	47
8	.807400	54	8	.810098	54	8	.812780	54
9	.807467	61	9	.810165	61	9	.812846	60
6420	.807535	00	6460	.810232	00	6500	.812913	00
1	.807603	07	1	.810300	07	1	.812980	07
2	.807670	14	2	.810367	13	2	.813047	13
3	.807738	20	3	.810434	20	3	.813114	20
4	.807805	27	4	.810501	27	4	.813180	27
5	.807873	34	5	.810568	33	5	.813247	33
6	.807941	41	6	.810636	40	6	.813314	40
7	.808008	48	7	.810703	47	7	.813381	47
8	.808076	54	8	.810770	54	8	.813447	54
9	.808143	61	9	.810837	60	9	.813514	60
6430	.808211	00	6470	.810904	00	6510	.813581	00
1	.808278	07	1	.810971	07	1	.813648	07
2	.808346	14	2	.811038	13	2	.813714	13
3	.808414	20	3	.811106	20	3	.813781	20
4	.808481	27	4	.811173	27	4	.813848	27
5	.808549	34	5	.811240	33	5	.813914	33
6	.808617	41	6	.811307	40	6	.813981	40
7	.808683	48	7	.811374	47	7	.814048	47
8	.808751	54	8	.811441	54	8	.814114	54
9	.808818	61	9	.811508	60	9	.814181	60

眞數	對數	差	眞數	對數	差	眞數	對數	差 53
No.	Log.	part.	No.	Log.	part.	No.	Log.	part.
6520	.814248	00	6560	.816904	00	6600	.819544	00
1	.814314	07	1	.816970	07	1	.819610	07
2	.814381	13	2	.817036	13	2	.819675	13
3	.814447	20	3	.817102	20	3	.819741	20
4	.814514	26	4	.817169	26	4	.819807	26
5	.814580	33	5	.817235	33	5	.819873	33
6	.814647	40	6	.817301	40	6	.819939	40
7	.814714	46	7	.817367	46	7	.820004	46
8	.814780	53	8	.817433	53	8	.820070	53
9	.814847	60	9	.817499	59	9	.820136	59
6530	.814913	00	6570	.817565	00	6610	.820201	00
1	.814980	07	1	.817631	07	1	.820267	07
2	.815046	13	2	.817698	13	2	.820333	13
3	.815113	20	3	.817764	20	3	.820398	20
4	.815179	26	4	.817830	26	4	.820464	26
5	.815246	33	5	.817896	33	5	.820530	33
6	.815312	40	6	.817962	40	6	.820595	40
7	.815378	46	7	.818028	46	7	.820661	46
8	.815445	53	8	.818094	53	8	.820727	53
9	.815511	60	9	.818160	59	9	.820792	59
6540	.815578	00	6580	.818226	00	6620	.820858	00
1	.815644	07	1	.818292	07	1	.820924	07
2	.815710	13	2	.818358	13	2	.820989	13
3	.815777	20	3	.818424	20	3	.821055	20
4	.815843	26	4	.818490	26	4	.821120	26
5	.815910	33	5	.818556	33	5	.821186	33
6	.815976	40	6	.818622	40	6	.821251	40
7	.816042	46	7	.818688	46	7	.821317	46
8	.816109	53	8	.818754	53	8	.821382	53
9	.816175	60	9	.818819	59	9	.821448	59
6550	.816241	00	6590	.818885	00	6630	.821513	00
1	.816308	07	1	.818951	07	1	.821579	07
2	.816374	13	2	.819017	13	2	.821644	13
3	.816440	20	3	.819083	20	3	.821710	20
4	.816506	26	4	.819149	26	4	.821775	26
5	.816573	33	5	.819215	33	5	.821841	33
6	.816639	40	6	.819281	40	6	.821906	39
7	.816705	46	7	.819346	46	7	.821972	46
8	.816771	53	8	.819412	53	8	.822037	52
9	.816838	60	9	.819478	59	9	.822103	59



眞數	對數	差	眞數	對數	差	眞數	對數	差 54
No.	Log.	part.	No.	Log.	part.	No.	Log.	part.
6640	.822168	00	6680	.824776	00	6720	.827369	00
1	.822233	07	1	.824841	06	1	.827434	06
2	.822299	13	2	.824906	13	2	.827498	13
3	.822364	20	3	.824971	19	3	.827563	19
4	.822430	26	4	.825036	26	4	.827628	26
5	.822495	33	5	.825101	32	5	.827692	32
6	.822560	39	6	.825166	39	6	.827757	39
7	.822626	46	7	.825231	45	7	.827821	45
8	.822691	52	8	.825296	52	8	.827886	52
9	.822756	59	9	.825361	58	9	.827950	58
6650	.822822	00	6690	.825426	00	6730	.828015	00
1	.822887	07	1	.825491	06	1	.828080	06
2	.822952	13	2	.825556	13	2	.828144	13
3	.823017	20	3	.825621	19	3	.828209	19
4	.823083	26	4	.825686	26	4	.828273	26
5	.823148	33	5	.825751	32	5	.828338	32
6	.823213	39	6	.825815	39	6	.828402	39
7	.823279	46	7	.825880	45	7	.828466	45
8	.823344	52	8	.825945	52	8	.828531	52
9	.823409	59	9	.826010	58	9	.828595	58
6660	.823474	00	6700	.826075	00	6740	.828660	00
1	.823539	07	1	.826140	06	1	.828724	06
2	.823605	13	2	.826204	13	2	.828789	13
3	.823670	20	3	.826269	19	3	.828853	19
4	.823735	26	4	.826334	26	4	.828918	26
5	.823800	33	5	.826399	32	5	.828982	32
6	.823865	39	6	.826463	39	6	.829046	39
7	.823930	46	7	.826528	45	7	.829111	45
8	.823996	52	8	.826593	52	8	.829175	52
9	.824061	59	9	.826658	58	9	.829239	58
6670	.824126	00	6710	.826722	00	6750	.829304	00
1	.824191	06	1	.826787	06	1	.829368	06
2	.824256	13	2	.826852	13	2	.829432	13
3	.824321	19	3	.826917	19	3	.829497	19
4	.824386	26	4	.826981	26	4	.829561	26
5	.824451	32	5	.827046	32	5	.829625	32
6	.824516	39	6	.827111	39	6	.829690	39
7	.824581	45	7	.827175	45	7	.829754	45
8	.824646	52	8	.827240	52	8	.829818	52
9	.824711	58	9	.827305	58	9	.829882	58

眞數	對數	差	眞數	對數	差	眞數	對數	差 55
No.	Log.	part.	No.	Log.	part.	No.	Log.	part.
6760	.829947	00	6800	.832509	00	6840	.835056	00
1	.830011	06	1	.832573	06	1	.835120	06
2	.830075	13	2	.832637	13	2	.835183	13
3	.830139	19	3	.832700	19	3	.835246	19
4	.830204	26	4	.832764	26	4	.835310	26
5	.830268	32	5	.832828	32	5	.835373	32
6	.830332	38	6	.832892	38	6	.835437	38
7	.830396	45	7	.832956	45	7	.835500	45
8	.830460	51	8	.833019	51	8	.835564	51
9	.830524	58	9	.833083	58	9	.835627	58
6770	.830589	00	6810	.833147	00	6850	.835691	00
1	.830653	06	1	.833211	06	1	.835754	06
2	.830717	13	2	.833275	13	2	.835817	13
3	.830781	19	3	.833338	19	3	.835881	19
4	.830845	26	4	.833402	26	4	.835944	26
5	.830909	32	5	.833466	32	5	.836007	32
6	.830973	38	6	.833530	38	6	.836071	38
7	.831037	45	7	.833593	45	7	.836134	45
8	.831102	51	8	.833657	51	8	.836197	51
9	.831166	58	9	.833721	58	9	.836261	58
6780	.831230	00	6820	.833784	00	6860	.836324	00
1	.831294	06	1	.833848	06	1	.836387	06
2	.831358	13	2	.833912	13	2	.836451	13
3	.831422	19	3	.833975	19	3	.836514	19
4	.831486	26	4	.834039	26	4	.836577	26
5	.831550	32	5	.834103	32	5	.836640	32
6	.831614	38	6	.834166	38	6	.836704	38
7	.831678	45	7	.834230	45	7	.836767	45
8	.831742	51	8	.834293	51	8	.836830	51
9	.831806	58	9	.834357	58	9	.836893	58
6790	.831870	00	6830	.834421	00	6870	.836957	00
1	.831934	06	1	.834484	06	1	.837020	06
2	.831998	13	2	.834548	13	2	.837083	13
3	.832062	19	3	.834611	19	3	.837146	19
4	.832125	26	4	.834675	25	4	.837209	25
5	.832189	32	5	.834738	32	5	.837273	32
6	.832253	38	6	.834802	38	6	.837336	38
7	.832317	45	7	.834866	45	7	.837399	44
8	.832381	51	8	.834929	51	8	.837462	51
9	.832445	58	9	.834993	58	9	.837525	57



眞數	對數	差	眞數	對數	差	眞數	對數	差 56
No.	Log.	part.	No.	Log.	part.	No.	Log.	part.
6880	.837588	00	6920	.840106	00	6960	.842609	00
1	.837652	06	1	.840169	06	1	.842672	06
2	.837715	13	2	.840232	13	2	.842734	12
3	.837778	19	3	.840294	19	3	.842796	19
4	.837841	25	4	.840357	25	4	.842859	25
5	.837904	32	5	.840420	31	5	.842921	31
6	.837967	38	6	.840482	38	6	.842983	37
7	.838030	44	7	.840545	44	7	.843046	44
8	.838093	50	8	.840608	50	8	.843108	50
9	.838156	57	9	.840671	57	9	.843170	56
6890	.838219	00	6930	.840733	00	6970	.843233	00
1	.838282	06	1	.840796	06	1	.843295	06
2	.838345	13	2	.840859	13	2	.843357	12
3	.838408	19	3	.840921	19	3	.843420	19
4	.838471	25	4	.840984	25	4	.843482	25
5	.838534	32	5	.841046	31	5	.843544	31
6	.838597	38	6	.841109	38	6	.843606	37
7	.838660	44	7	.841172	44	7	.843669	43
8	.838723	50	8	.841234	50	8	.843731	50
9	.838786	57	9	.841297	56	9	.843793	56
6900	.838849	00	6940	.841359	00	6980	.843855	00
1	.838912	06	1	.841422	06	1	.843918	06
2	.838975	13	2	.841485	13	2	.843980	12
3	.839038	19	3	.841547	19	3	.844042	19
4	.839101	25	4	.841610	25	4	.844104	25
5	.839164	31	5	.841672	31	5	.844166	31
6	.839227	38	6	.841735	38	6	.844229	37
7	.839289	44	7	.841797	44	7	.844291	43
8	.839352	50	8	.841860	50	8	.844353	50
9	.839415	57	9	.841922	56	9	.844415	56
6910	.839478	00	6950	.841985	00	6990	.844477	00
1	.839541	06	1	.842047	06	1	.844539	06
2	.839604	13	2	.842110	12	2	.844601	12
3	.839667	19	3	.842172	19	3	.844663	19
4	.839729	25	4	.842235	25	4	.844726	25
5	.839792	31	5	.842297	31	5	.844788	31
6	.839855	38	6	.842360	37	6	.844850	37
7	.839918	44	7	.842422	44	7	.844912	43
8	.839981	50	8	.842484	50	8	.844974	50
9	.840043	57	9	.842547	56	9	.845036	56

眞數	對數	差	眞數	對數	差	眞數	對數	差 57
No.	Log.	part.	No.	Log.	part.	No.	Log.	part.
7000	.845098	00	7040	.847573	00	7080	.850033	00
1	.845160	06	1	.847634	06	1	.850095	06
2	.845222	12	2	.847696	12	2	.850156	12
3	.845284	19	3	.847758	18	3	.850217	18
4	.845346	25	4	.847819	25	4	.850279	25
5	.845408	31	5	.847881	31	5	.850340	31
6	.845470	37	6	.847943	37	6	.850401	37
7	.845532	43	7	.848004	43	7	.850462	43
8	.845594	50	8	.848066	49	8	.850524	49
9	.845656	56	9	.848127	55	9	.850585	55
7010	.845718	00	7050	.848189	00	7090	.850646	00
1	.845780	06	1	.848251	06	1	.850707	06
2	.845842	12	2	.848312	12	2	.850769	12
3	.845904	19	3	.848374	18	3	.850830	18
4	.845966	25	4	.848435	25	4	.850891	25
5	.846028	31	5	.848497	31	5	.850952	31
6	.846090	37	6	.848559	37	6	.851014	37
7	.846151	43	7	.848620	43	7	.851075	43
8	.846213	50	8	.848682	49	8	.851136	49
9	.846275	56	9	.848743	55	9	.851197	55
7020	.846337	00	7060	.848805	00	7100	.851258	00
1	.846399	06	1	.848866	06	1	.851319	06
2	.846461	12	2	.848928	12	2	.851381	12
3	.846523	19	3	.848989	18	3	.851442	18
4	.846584	25	4	.849051	25	4	.851503	25
5	.846646	31	5	.849112	31	5	.851564	31
6	.846708	37	6	.849174	37	6	.851625	37
7	.846770	43	7	.849235	43	7	.851686	43
8	.846832	50	8	.849296	49	8	.851747	49
9	.846893	56	9	.849358	55	9	.851808	55
7030	.846955	00	7070	.849419	00	7110	.851870	00
1	.847017	06	1	.849481	06	1	.851931	06
2	.847079	12	2	.849542	12	2	.851992	12
3	.847141	19	3	.849604	18	3	.852053	18
4	.847202	25	4	.849665	25	4	.852114	25
5	.847264	31	5	.849726	31	5	.852175	31
6	.847326	37	6	.849788	37	6	.852236	37
7	.847388	43	7	.849849	43	7	.852297	43
8	.847449	50	8	.849911	49	8	.852358	49
9	.847511	56	9	.849972	55	9	.852419	55



眞數	對數	差	眞數	對數	差	眞數	對數	差 58
No.	Log.	part.	No.	Log.	part.	No.	Log.	part.
7120	.852480	00	7160	.854913	00	7200	.857332	00
1	.852541	06	1	.854974	06	1	.857393	06
2	.852602	12	2	.855034	12	2	.857453	12
3	.852663	18	3	.855095	18	3	.857513	18
4	.852724	24	4	.855156	24	4	.857574	24
5	.852785	30	5	.855216	30	5	.857634	30
6	.852846	37	6	.855277	36	6	.857694	36
7	.852907	43	7	.855337	42	7	.857754	42
8	.852968	49	8	.855398	48	8	.857815	48
9	.853029	55	9	.855459	54	9	.857875	54
7130	.853089	00	7170	.855519	00	7210	.857935	00
1	.853150	06	1	.855580	06	1	.857995	06
2	.853211	12	2	.855640	12	2	.858056	12
3	.853272	18	3	.855701	18	3	.858116	18
4	.853333	24	4	.855761	24	4	.858176	24
5	.853394	30	5	.855822	30	5	.858236	30
6	.853455	37	6	.855882	36	6	.858296	36
7	.853516	43	7	.855943	42	7	.858357	42
8	.853576	49	8	.856003	48	8	.858417	48
9	.853637	55	9	.856064	54	9	.858477	54
7140	.853698	00	7180	.856124	00	7220	.858537	00
1	.853759	06	1	.856185	06	1	.858597	06
2	.853820	12	2	.856245	12	2	.858657	12
3	.853881	18	3	.856306	18	3	.858718	18
4	.853941	24	4	.856366	24	4	.858778	24
5	.854002	30	5	.856427	30	5	.858838	30
6	.854063	37	6	.856487	36	6	.858898	36
7	.854124	43	7	.856548	42	7	.858958	42
8	.854184	49	8	.856608	48	8	.859018	48
9	.854245	55	9	.856668	54	9	.859078	54
7150	.854306	00	7190	.856729	00	7230	.859138	00
1	.854367	06	1	.856789	06	1	.859198	06
2	.854427	12	2	.856850	12	2	.859258	12
3	.854488	18	3	.856910	18	3	.859318	18
4	.854549	24	4	.856970	24	4	.859378	24
5	.854610	30	5	.857031	30	5	.859438	30
6	.854670	36	6	.857091	36	6	.859499	36
7	.854731	42	7	.857151	42	7	.859559	42
8	.854792	48	8	.857212	48	8	.859619	48
9	.854852	54	9	.857272	54	9	.859679	54

眞數	對數	差	眞數	對數	差	眞數	對數	差 59
No.	Log.	part.	No.	Log.	part.	No.	Log.	part.
7240	.859739	00	7280	.862131	00	7320	.864511	00
1	.859798	06	1	.862191	06	1	.864570	06
2	.859858	12	2	.862251	12	2	.864630	12
3	.859918	18	3	.862310	18	3	.864689	18
4	.859978	24	4	.862370	24	4	.864748	24
5	.860038	30	5	.862430	30	5	.864808	30
6	.860098	36	6	.862489	36	6	.864867	36
7	.860158	42	7	.862549	42	7	.864926	42
8	.860218	48	8	.862608	48	8	.864985	48
9	.860278	54	9	.862668	54	9	.865045	54
7250	.860338	00	7290	.862727	00	7330	.865104	00
1	.860398	06	1	.862787	06	1	.865163	06
2	.860458	12	2	.862847	12	2	.865222	12
3	.860518	18	3	.862906	18	3	.865282	18
4	.860578	24	4	.862966	24	4	.865341	24
5	.860637	30	5	.863025	30	5	.865400	30
6	.860697	36	6	.863085	36	6	.865459	36
7	.860757	42	7	.863144	42	7	.865518	42
8	.860817	48	8	.863204	48	8	.865578	48
9	.860877	54	9	.863263	54	9	.865637	54
7260	.860937	00	7300	.863323	00	7340	.865696	00
1	.860996	06	1	.863382	06	1	.865755	06
2	.861056	12	2	.863442	12	2	.865814	12
3	.861116	18	3	.863501	18	3	.865873	18
4	.861176	24	4	.863561	24	4	.865933	24
5	.861236	30	5	.863620	30	5	.865992	30
6	.861295	36	6	.863680	36	6	.866051	36
7	.861355	42	7	.863739	42	7	.866110	42
8	.861415	48	8	.863798	48	8	.866169	48
9	.861475	54	9	.863858	54	9	.866228	54
7270	.861534	00	7310	.863917	00	7350	.866287	00
1	.861594	06	1	.863977	06	1	.866346	06
2	.861654	12	2	.864036	12	2	.866405	12
3	.861714	18	3	.864096	18	3	.866465	18
4	.861773	24	4	.864155	24	4	.866524	24
5	.861833	30	5	.864214	30	5	.866583	30
6	.861893	36	6	.864274	36	6	.866642	35
7	.861952	42	7	.864333	42	7	.866701	41
8	.862012	48	8	.864392	48	8	.866760	47
9	.862072	54	9	.864452	54	9	.866819	53



眞數	對數	差	眞數	對數	差	眞數	對數	差 60
No.	Log.	part.	No.	Log.	part.	No.	Log.	part.
7360	.866878	00	7400	.869232	00	7440	.871573	00
1	.866937	06	1	.869290	06	1	.871631	06
2	.866996	12	2	.869349	12	2	.871690	12
3	.867055	18	3	.869408	18	3	.871748	18
4	.867114	24	4	.869466	24	4	.871806	23
5	.867173	29	5	.869525	29	5	.871865	29
6	.867232	35	6	.869584	35	6	.871923	35
7	.867291	41	7	.869642	41	7	.871981	41
8	.867350	47	8	.869701	47	8	.872040	47
9	.867409	53	9	.869760	53	9	.872098	53
7370	.867467	00	7410	.869818	00	7450	.872156	00
1	.867526	06	1	.869877	06	1	.872215	06
2	.867585	12	2	.869935	12	2	.872273	12
3	.867644	18	3	.869994	18	3	.872331	18
4	.867703	24	4	.870053	24	4	.872389	23
5	.867762	29	5	.870111	29	5	.872448	29
6	.867821	35	6	.870170	35	6	.872506	35
7	.867880	41	7	.870228	41	7	.872564	41
8	.867939	47	8	.870287	47	8	.872622	47
9	.867997	53	9	.870345	53	9	.872681	53
7380	.868056	00	7420	.870404	00	7460	.872739	00
1	.868115	06	1	.870462	06	1	.872797	06
2	.868174	12	2	.870521	12	2	.872855	12
3	.868233	18	3	.870579	18	3	.872913	18
4	.868292	24	4	.870638	24	4	.872972	23
5	.868350	29	5	.870696	29	5	.873030	29
6	.868409	35	6	.870755	35	6	.873088	35
7	.868468	41	7	.870813	41	7	.873146	41
8	.868527	47	8	.870872	47	8	.873204	47
9	.868586	53	9	.870930	53	9	.873262	53
7390	.868644	00	7430	.870989	00	7470	.873321	00
1	.868703	06	1	.871047	06	1	.873379	06
2	.868762	12	2	.871106	12	2	.873437	12
3	.868821	18	3	.871164	18	3	.873495	18
4	.868879	24	4	.871223	24	4	.873553	23
5	.868938	29	5	.871281	29	5	.873611	29
6	.868997	35	6	.871339	35	6	.873669	35
7	.869056	41	7	.871398	41	7	.873727	41
8	.869114	47	8	.871456	47	8	.873785	47
9	.869173	53	9	.871515	53	9	.873843	53

眞數	對數	差	眞數	對數	差	眞數	對數	差 61
No.	Log.	part.	No.	Log.	part.	No.	Log.	part.
7480	.873902	00	7520	.876218	00	7560	.878522	00
1	.873960	06	1	.876276	06	1	.878579	06
2	.874018	12	2	.876333	12	2	.878637	12
3	.874076	17	3	.876391	17	3	.878694	17
4	.874134	23	4	.876449	23	4	.878751	23
5	.874192	29	5	.876506	29	5	.878809	29
6	.874250	35	6	.876564	34	6	.878866	34
7	.874308	41	7	.876622	40	7	.878924	40
8	.874366	46	8	.876680	46	8	.878981	46
9	.874424	52	9	.876737	52	9	.879038	52
7490	.874482	00	7530	.876795	00	7570	.879096	00
1	.874540	06	1	.876853	06	1	.879153	06
2	.874598	12	2	.876910	12	2	.879211	12
3	.874656	17	3	.876968	17	3	.879268	17
4	.874714	23	4	.877026	23	4	.879325	23
5	.874772	29	5	.877083	29	5	.879383	29
6	.874830	35	6	.877141	34	6	.879440	34
7	.874887	41	7	.877198	40	7	.879497	40
8	.874945	46	8	.877256	46	8	.879555	46
9	.875003	52	9	.877314	52	9	.879612	52
7500	.875061	00	7540	.877371	00	7580	.879669	00
1	.875119	06	1	.877429	06	1	.879726	06
2	.875177	12	2	.877486	12	2	.879784	11
3	.875235	17	3	.877544	17	3	.879841	17
4	.875293	23	4	.877602	23	4	.879898	23
5	.875351	29	5	.877659	29	5	.879956	28
6	.875409	35	6	.877717	34	6	.880013	34
7	.875466	41	7	.877774	40	7	.880070	40
8	.875524	46	8	.877832	46	8	.880127	46
9	.875582	52	9	.877889	52	9	.880185	51
7510	.875640	00	7550	.877947	00	7590	.880242	00
1	.875698	06	1	.878004	06	1	.880299	06
2	.875756	12	2	.878062	12	2	.880356	11
3	.875813	17	3	.878119	17	3	.880413	17
4	.875871	23	4	.878177	23	4	.880471	23
5	.875929	29	5	.878234	29	5	.880528	28
6	.875987	35	6	.878292	34	6	.880585	34
7	.876045	41	7	.878349	40	7	.880642	40
8	.876102	46	8	.878407	46	8	.880699	46
9	.876160	52	9	.878464	52	9	.880756	51



眞數	對數	差	眞數	對數	差	眞數	對數	差 62
No.	Log.	part.	No.	Log.	part.	No.	Log.	part.
7600	.880814	00	7640	.883093	00	7680	.885361	00
1	.880871	06	1	.883150	06	1	.885418	06
2	.880928	11	2	.883207	11	2	.885474	11
3	.880985	17	3	.883264	17	3	.885531	17
4	.881042	23	4	.883321	23	4	.885587	23
5	.881099	28	5	.883377	28	5	.885644	28
6	.881156	34	6	.883434	34	6	.885700	34
7	.881213	40	7	.883491	40	7	.885757	39
8	.881270	46	8	.883548	46	8	.885813	45
9	.881328	51	9	.883605	51	9	.885870	51
7610	.881385	00	7650	.883661	00	7690	.885926	00
1	.881442	06	1	.883718	06	1	.885983	06
2	.881499	11	2	.883775	11	2	.886039	11
3	.881556	17	3	.883832	17	3	.886096	17
4	.881613	23	4	.883888	23	4	.886152	23
5	.881670	28	5	.883945	28	5	.886209	28
6	.881727	34	6	.884002	34	6	.886265	34
7	.881784	40	7	.884059	40	7	.886321	39
8	.881841	46	8	.884115	46	8	.886378	45
9	.881898	51	9	.884172	51	9	.886434	51
7620	.881955	00	7660	.884229	00	7700	.886491	00
1	.882012	06	1	.884285	06	1	.886547	06
2	.882069	11	2	.884342	11	2	.886603	11
3	.882126	17	3	.884399	17	3	.886660	17
4	.882183	23	4	.884455	23	4	.886716	23
5	.882240	28	5	.884512	28	5	.886773	28
6	.882297	34	6	.884569	34	6	.886829	34
7	.882354	40	7	.884625	40	7	.886885	39
8	.882411	46	8	.884682	46	8	.886942	45
9	.882468	51	9	.884739	51	9	.886998	51
7630	.882524	00	7670	.884795	00	7710	.887054	00
1	.882581	06	1	.884852	06	1	.887111	06
2	.882638	11	2	.884909	11	2	.887167	11
3	.882695	17	3	.884965	17	3	.887223	17
4	.882752	23	4	.885022	23	4	.887280	23
5	.882809	28	5	.885078	28	5	.887336	28
6	.882866	34	6	.885135	34	6	.887392	34
7	.882923	40	7	.885191	40	7	.887448	39
8	.882980	46	8	.885248	46	8	.887505	45
9	.883036	51	9	.885305	51	9	.887561	51

眞數	對數	差	眞數	對數	差	眞數	對數	差 63
No.	Log.	part.	No.	Log.	part.	No.	Log.	part.
7720	.887617	00	7760	.889862	00	7800	.892095	00
1	.887674	06	1	.889918	06	1	.892150	06
2	.887730	11	2	.889974	11	2	.892206	11
3	.887786	17	3	.890030	17	3	.892262	17
4	.887842	23	4	.890085	22	4	.892317	22
5	.887898	28	5	.890141	28	5	.892373	28
6	.887955	34	6	.890197	34	6	.892428	33
7	.888011	39	7	.890253	39	7	.892484	39
8	.888067	45	8	.890309	45	8	.892540	44
9	.888123	51	9	.890365	50	9	.892595	50
7730	.888179	00	7770	.890421	00	7810	.892651	00
1	.888236	06	1	.890477	06	1	.892707	06
2	.888292	11	2	.890533	11	2	.892762	11
3	.888348	17	3	.890589	17	3	.892818	17
4	.888404	22	4	.890644	22	4	.892873	22
5	.888460	28	5	.890700	28	5	.892929	28
6	.888516	34	6	.890756	34	6	.892985	33
7	.888573	39	7	.890812	39	7	.893040	39
8	.888629	45	8	.890868	45	8	.893096	44
9	.888685	50	9	.890924	50	9	.893151	50
7740	.888741	00	7780	.890980	00	7820	.893207	00
1	.888797	06	1	.891035	06	1	.893262	06
2	.888853	11	2	.891091	11	2	.893318	11
3	.888909	17	3	.891147	17	3	.893373	17
4	.888965	22	4	.891203	22	4	.893429	22
5	.889021	28	5	.891259	28	5	.893484	28
6	.889077	34	6	.891314	34	6	.893540	33
7	.889134	39	7	.891370	39	7	.893595	39
8	.889190	45	8	.891426	45	8	.893651	44
9	.889246	50	9	.891482	50	9	.893706	50
7750	.889302	00	7790	.891537	00	7830	.893762	00
1	.889358	06	1	.891593	06	1	.893817	06
2	.889414	11	2	.891649	11	2	.893873	11
3	.889470	17	3	.891705	17	3	.893928	17
4	.889526	22	4	.891760	22	4	.893984	22
5	.889582	28	5	.891816	28	5	.894039	28
6	.889638	34	6	.891872	33	6	.894094	33
7	.889694	39	7	.891927	39	7	.894150	39
8	.889750	45	8	.891983	44	8	.894205	44
9	.889806	50	9	.892039	50	9	.894261	50



眞數	對數	差	眞數	對數	差	眞數	對數	差 64
No.	Log.	part.	No.	Log.	part.	No.	Log.	part.
7840	.894316	00	7880	.896526	00	7920	.898725	00
1	.894371	06	1	.896581	06	1	.898780	05
2	.894427	11	2	.896636	11	2	.898835	11
3	.894482	17	3	.896691	17	3	.898890	17
4	.894538	22	4	.896747	22	4	.898944	22
5	.894593	27	5	.896802	27	5	.898999	27
6	.894648	33	6	.896857	33	6	.899054	33
7	.894704	39	7	.896912	39	7	.899109	38
8	.894759	44	8	.896967	44	8	.899164	44
9	.894814	50	9	.897022	50	9	.899218	50
7850	.894870	00	7890	.897077	00	7930	.899273	00
1	.894925	06	1	.897132	06	1	.899328	05
2	.894980	11	2	.897187	11	2	.899383	11
3	.895036	17	3	.897242	17	3	.899437	17
4	.895091	22	4	.897297	22	4	.899492	22
5	.895146	27	5	.897352	27	5	.899547	27
6	.895201	33	6	.897407	33	6	.899602	33
7	.895257	39	7	.897462	39	7	.899656	38
8	.895312	44	8	.897517	44	8	.899711	44
9	.895367	50	9	.897572	50	9	.899766	50
7860	.895422	00	7900	.897627	00	7940	.899820	00
1	.895478	06	1	.897682	06	1	.899875	05
2	.895533	11	2	.897737	11	2	.899930	11
3	.895588	17	3	.897792	17	3	.899985	17
4	.895643	22	4	.897847	22	4	.900039	22
5	.895699	27	5	.897902	27	5	.900094	27
6	.895754	33	6	.897957	33	6	.900149	33
7	.895809	39	7	.898012	39	7	.900203	38
8	.895864	44	8	.898067	44	8	.900258	44
9	.895919	50	9	.898122	50	9	.900312	50
7870	.895975	00	7910	.898176	00	7950	.900367	00
1	.896030	06	1	.898231	06	1	.900422	05
2	.896085	11	2	.898286	11	2	.900476	11
3	.896140	17	3	.898341	17	3	.900531	17
4	.896195	22	4	.898396	22	4	.900586	22
5	.896251	27	5	.898451	27	5	.900640	27
6	.896306	33	6	.898506	33	6	.900695	33
7	.896361	39	7	.898561	39	7	.900749	38
8	.896416	44	8	.898615	44	8	.900804	44
9	.896471	50	9	.898670	50	9	.900858	50

眞數	對數	差	眞數	對數	差	眞數	對數	差 65
No.	Log.	part.	No.	Log.	part.	No.	Log.	part.
7960	.900913	00	8000	.903090	00	8040	.905256	00
1	.900968	05	1	.903144	05	1	.905310	05
2	.901022	11	2	.903198	11	2	.905364	11
3	.901077	16	3	.903253	16	3	.905418	16
4	.901131	22	4	.903307	22	4	.905472	22
5	.901186	27	5	.903361	27	5	.905526	27
6	.901240	33	6	.903416	32	6	.905580	32
7	.901295	38	7	.903470	38	7	.905634	38
8	.901349	44	8	.903524	43	8	.905688	43
9	.901404	49	9	.903578	49	9	.905742	49
7970	.901458	00	8010	.903632	00	8050	.905796	00
1	.901513	05	1	.903687	05	1	.905850	05
2	.901567	11	2	.903741	11	2	.905904	11
3	.901622	16	3	.903795	16	3	.905958	16
4	.901676	22	4	.903849	22	4	.906012	22
5	.901731	27	5	.903903	27	5	.906065	27
6	.901785	33	6	.903958	32	6	.906119	32
7	.901840	38	7	.904012	38	7	.906173	38
8	.901894	44	8	.904066	43	8	.906227	43
9	.901948	49	9	.904120	49	9	.906281	49
7980	.902003	00	8020	.904174	00	8060	.906335	00
1	.902057	05	1	.904228	05	1	.906389	05
2	.902112	11	2	.904283	11	2	.906443	11
3	.902166	16	3	.904337	16	3	.906497	16
4	.902220	22	4	.904391	22	4	.906550	22
5	.902275	27	5	.904445	27	5	.906604	27
6	.902329	33	6	.904499	32	6	.906658	32
7	.902384	38	7	.904553	38	7	.906712	38
8	.902438	44	8	.904607	43	8	.906766	43
9	.902492	49	9	.904661	49	9	.906820	49
7990	.902547	00	8030	.904715	00	8070	.906873	00
1	.902601	05	1	.904770	05	1	.906927	05
2	.902655	11	2	.904824	11	2	.906981	11
3	.902710	16	3	.904878	16	3	.907035	16
4	.902764	22	4	.904932	22	4	.907089	22
5	.902818	27	5	.904986	27	5	.907142	27
6	.902873	33	6	.905040	32	6	.907196	32
7	.902927	38	7	.905094	38	7	.907250	38
8	.902981	44	8	.905148	43	8	.907304	43
9	.903036	49	9	.905202	49	9	.907358	49



眞數	對數	差	眞數	對數	差	眞數	對數	差 66
No.	Log.	part.	No.	Log.	part.	No.	Log.	part.
8080	.907411	00	8120	.909556	00	8160	.911690	00
1	.907465	05	1	.909609	05	1	.911743	05
2	.907519	11	2	.909663	11	2	.911797	11
3	.907573	16	3	.909716	16	3	.911850	16
4	.907626	22	4	.909770	21	4	.911903	21
5	.907680	27	5	.909823	27	5	.911956	27
6	.907734	32	6	.909877	32	6	.912009	32
7	.907787	38	7	.909930	37	7	.912063	37
8	.907841	43	8	.909984	43	8	.912116	42
9	.907895	49	9	.910037	48	9	.912169	48
8090	.907948	00	8130	.910090	00	8170	.912222	00
1	.908002	05	1	.910144	05	1	.912275	05
2	.908056	11	2	.910197	11	2	.912328	11
3	.908109	16	3	.910251	16	3	.912381	16
4	.908163	22	4	.910304	21	4	.912435	21
5	.908217	27	5	.910358	27	5	.912488	27
6	.908270	32	6	.910411	32	6	.912541	32
7	.908324	38	7	.910464	37	7	.912594	37
8	.908378	43	8	.910518	43	8	.912647	42
9	.908431	49	9	.910571	48	9	.912700	48
8100	.908485	00	8140	.910624	00	8180	.912753	00
1	.908539	05	1	.910678	05	1	.912806	05
2	.908592	11	2	.910731	11	2	.912859	11
3	.908646	16	3	.910784	16	3	.912913	16
4	.908699	21	4	.910838	21	4	.912966	21
5	.908753	27	5	.910891	27	5	.913019	27
6	.908807	32	6	.910944	32	6	.913072	32
7	.908860	37	7	.910998	37	7	.913125	37
8	.908914	43	8	.911051	43	8	.913178	42
9	.908967	48	9	.911104	48	9	.913231	48
8110	.909021	00	8150	.911158	00	8190	.913284	00
1	.909074	05	1	.911211	05	1	.913337	05
2	.909128	11	2	.911264	11	2	.913390	11
3	.909181	16	3	.911317	16	3	.913443	16
4	.909235	21	4	.911371	21	4	.913496	21
5	.909288	27	5	.911424	27	5	.913549	27
6	.909341	32	6	.911477	32	6	.913602	32
7	.909395	37	7	.911530	37	7	.913655	37
8	.909449	43	8	.911584	42	8	.913708	42
9	.909502	48	9	.911637	48	9	.913761	48

眞數	對數	差	眞數	對數	差	眞數	對數	差 67
No.	Log.	part.	No.	Log.	part.	No.	Log.	part.
8200	.913814	00	8240	.915927	00	8280	.918030	00
1	.913867	05	1	.915980	05	1	.918083	05
2	.913920	11	2	.916033	11	2	.918135	11
3	.913973	16	3	.916085	16	3	.918188	16
4	.914026	21	4	.916138	21	4	.918240	21
5	.914079	27	5	.916191	27	5	.918292	26
6	.914131	32	6	.916243	32	6	.918345	31
7	.914184	37	7	.916296	37	7	.918397	37
8	.914237	42	8	.916349	42	8	.918450	42
9	.914290	48	9	.916401	48	9	.918502	47
8210	.914343	00	8250	.916454	00	8290	.918554	00
1	.914396	05	1	.916507	05	1	.918607	05
2	.914449	11	2	.916559	11	2	.918659	11
3	.914502	16	3	.916612	16	3	.918712	16
4	.914555	21	4	.916664	21	4	.918764	21
5	.914608	27	5	.916717	26	5	.918816	26
6	.914660	32	6	.916770	31	6	.918869	31
7	.914713	37	7	.916822	37	7	.918921	37
8	.914766	42	8	.916875	42	8	.918973	42
9	.914819	48	9	.916927	47	9	.919026	47
8220	.914872	00	8260	.916980	00	8300	.919078	00
1	.914925	05	1	.917033	05	1	.919130	05
2	.914977	11	2	.917085	11	2	.919183	11
3	.915030	16	3	.917138	16	3	.919235	16
4	.915083	21	4	.917190	21	4	.919287	21
5	.915136	27	5	.917243	26	5	.919340	26
6	.915189	32	6	.917295	31	6	.919392	31
7	.915241	37	7	.917348	37	7	.919444	37
8	.915294	42	8	.917400	42	8	.919496	42
9	.915347	48	9	.917453	47	9	.919549	47
8230	.915400	00	8270	.917505	00	8310	.919601	00
1	.915453	05	1	.917558	05	1	.919653	05
2	.915505	11	2	.917610	11	2	.919705	11
3	.915558	16	3	.917663	16	3	.919758	16
4	.915611	21	4	.917715	21	4	.919810	21
5	.915664	27	5	.917768	26	5	.919862	26
6	.915716	32	6	.917820	31	6	.919914	31
7	.915769	37	7	.917873	37	7	.919967	37
8	.915822	42	8	.917925	42	8	.920019	42
9	.915874	48	9	.917978	47	9	.920071	47



眞數	對數	差	眞數	對數	差	眞數	對數	差 63
No.	Log.	part.	No.	Log.	part.	No.	Log.	part.
8220	.920123	00	8360	.922206	00	8400	.924279	00
1	.920175	05	1	.922258	05	1	.924331	05
2	.920228	10	2	.922310	10	2	.924383	10
3	.920280	16	3	.922362	16	3	.924434	15
4	.920332	21	4	.922414	21	4	.924486	21
5	.920384	26	5	.922466	26	5	.924538	26
6	.920436	31	6	.922518	31	6	.924589	31
7	.920489	36	7	.922570	36	7	.924641	36
8	.920541	42	8	.922622	42	8	.924693	41
9	.920593	47	9	.922674	47	9	.924744	46
8330	.920645	00	8370	.922725	00	8410	.924796	00
1	.920697	05	1	.922777	05	1	.924848	05
2	.920749	10	2	.922829	10	2	.924899	10
3	.920801	16	3	.922881	16	3	.924951	15
4	.920853	21	4	.922933	21	4	.925002	21
5	.920906	26	5	.922985	26	5	.925054	26
6	.920958	31	6	.923037	31	6	.925106	31
7	.921010	36	7	.923088	36	7	.925157	36
8	.921062	42	8	.923140	42	8	.925209	41
9	.921114	47	9	.923192	47	9	.925260	46
8340	.921166	00	8380	.923244	00	8420	.925312	00
1	.921218	05	1	.923296	05	1	.925364	05
2	.921270	10	2	.923348	10	2	.925415	10
3	.921322	16	3	.923399	16	3	.925467	15
4	.921374	21	4	.923451	21	4	.925518	21
5	.921426	26	5	.923503	26	5	.925570	26
6	.921478	31	6	.923555	31	6	.925621	31
7	.921530	36	7	.923607	36	7	.925673	36
8	.921582	42	8	.923658	42	8	.925724	41
9	.921634	47	9	.923710	47	9	.925776	46
8350	.921686	00	8390	.923762	00	8430	.925828	00
1	.921738	05	1	.923814	05	1	.925879	05
2	.921790	10	2	.923865	10	2	.925931	10
3	.921842	16	3	.923917	16	3	.925982	15
4	.921894	21	4	.923969	21	4	.926034	21
5	.921946	26	5	.924021	26	5	.926085	26
6	.921998	31	6	.924072	31	6	.926137	31
7	.922050	36	7	.924124	36	7	.926188	36
8	.922102	42	8	.924176	42	8	.926239	41
9	.922154	47	9	.924228	47	9	.926291	46

眞數	對數	差	眞數	對數	差	眞數	對數	差 69
No.	Log.	part.	No.	Log.	part.	No.	Log.	part.
8440	.926342	00	8480	.928396	00	8520	.930440	00
1	.926394	05	1	.928447	05	1	.930491	05
2	.926445	10	2	.928498	10	2	.930541	10
3	.926497	15	3	.928549	15	3	.930592	15
4	.926548	21	4	.928601	21	4	.930643	20
5	.926600	26	5	.928652	26	5	.930694	25
6	.926651	31	6	.928703	31	6	.930745	31
7	.926702	36	7	.928754	36	7	.930796	36
8	.926754	41	8	.928805	41	8	.930847	41
9	.926805	46	9	.928856	46	9	.930898	46
8450	.926857	00	8490	.928908	00	8530	.930949	00
1	.926908	05	1	.928959	05	1	.931000	05
2	.926959	10	2	.929010	10	2	.931051	10
3	.927011	15	3	.929061	15	3	.931102	15
4	.927062	21	4	.929112	20	4	.931153	20
5	.927114	26	5	.929163	26	5	.931203	25
6	.927165	31	6	.929214	31	6	.931254	31
7	.927216	36	7	.929266	36	7	.931305	36
8	.927268	41	8	.929317	41	8	.931356	41
9	.927319	46	9	.929368	46	9	.931407	46
8460	.927370	00	8500	.929419	00	8540	.931458	00
1	.927422	05	1	.929470	05	1	.931509	05
2	.927473	10	2	.929521	10	2	.931560	10
3	.927524	15	3	.929572	15	3	.931610	15
4	.927576	21	4	.929623	20	4	.931661	20
5	.927627	26	5	.929674	26	5	.931712	25
6	.927678	31	6	.929725	31	6	.931763	31
7	.927730	36	7	.929776	36	7	.931814	36
8	.927781	41	8	.929827	41	8	.931864	41
9	.927832	46	9	.929878	46	9	.931915	46
8470	.927883	00	8510	.929930	00	8550	.931966	00
1	.927935	05	1	.929981	05	1	.932017	05
2	.927986	10	2	.930032	10	2	.932068	10
3	.928037	15	3	.930083	15	3	.932118	15
4	.928088	21	4	.930134	20	4	.932169	20
5	.928140	26	5	.930185	26	5	.932220	25
6	.928191	31	6	.930236	31	6	.932271	30
7	.928242	36	7	.930287	36	7	.932321	35
8	.928293	41	8	.930338	41	8	.932372	40
9	.928345	46	9	.930389	46	9	.932423	45



眞數	對數	差	眞數	對數	差	眞數	對數	差 70
No.	Log.	part.	No.	Log.	part.	No.	Log.	part.
8560	.932474	00	8600	.934498	00	8640	.936514	00
1	.932524	05	1	.934549	05	1	.936564	05
2	.932575	10	2	.934599	10	2	.936614	10
3	.932626	15	3	.934650	15	3	.936664	15
4	.932677	20	4	.934700	20	4	.936715	20
5	.932727	25	5	.934751	25	5	.936765	25
6	.932778	30	6	.934801	30	6	.936815	30
7	.932829	35	7	.934852	35	7	.936865	35
8	.932879	40	8	.934902	40	8	.936916	40
9	.932930	45	9	.934953	45	9	.936966	45
8570	.932981	00	8610	.935003	00	8650	.937016	00
1	.933031	05	1	.935054	05	1	.937066	05
2	.933082	10	2	.935104	10	2	.937116	10
3	.933133	15	3	.935154	15	3	.937167	15
4	.933183	20	4	.935205	20	4	.937217	20
5	.933234	25	5	.935255	25	5	.937267	25
6	.933285	30	6	.935306	30	6	.937317	30
7	.933335	35	7	.935356	35	7	.937367	35
8	.933386	40	8	.935406	40	8	.937418	40
9	.933437	45	9	.935457	45	9	.937468	45
8580	.933487	00	8620	.935507	00	8660	.937518	00
1	.933538	05	1	.935558	05	1	.937568	05
2	.933588	10	2	.935608	10	2	.937618	10
3	.933639	15	3	.935658	15	3	.937668	15
4	.933690	20	4	.935709	20	4	.937718	20
5	.933740	25	5	.935759	25	5	.937769	25
6	.933791	30	6	.935809	30	6	.937819	30
7	.933841	35	7	.935860	35	7	.937869	35
8	.933892	40	8	.935910	40	8	.937919	40
9	.933943	45	9	.935960	45	9	.937969	45
8590	.933993	00	8630	.936011	00	8670	.938019	00
1	.934044	05	1	.936061	05	1	.938069	05
2	.934094	10	2	.936111	10	2	.938119	10
3	.934145	15	3	.936162	15	3	.938169	15
4	.934195	20	4	.936212	20	4	.938219	20
5	.934246	25	5	.936262	25	5	.938269	25
6	.934296	30	6	.936313	30	6	.938319	30
7	.934347	35	7	.936363	35	7	.938369	35
8	.934397	40	8	.936413	40	8	.938419	40
9	.934448	45	9	.936463	45	9	.938470	45

眞數	對數	差	眞數	對數	差	眞數	對數	差 71
No.	Log.	part.	No.	Log.	part.	No.	Log.	part.
8680	.938520	00	8720	.940516	00	8760	.942504	00
1	.938570	05	1	.940566	05	1	.942554	05
2	.938620	10	2	.940616	10	2	.942603	10
3	.938670	15	3	.940666	15	3	.942653	15
4	.938720	20	4	.940716	20	4	.942702	20
5	.938770	25	5	.940765	25	5	.942752	25
6	.938820	30	6	.940815	30	6	.942801	30
7	.938870	35	7	.940865	35	7	.942851	35
8	.938920	40	8	.940915	40	8	.942900	40
9	.938970	45	9	.940964	45	9	.942950	45
8690	.939020	00	8730	.941014	00	8770	.943000	00
1	.939070	05	1	.941064	05	1	.943049	05
2	.939120	10	2	.941114	10	2	.943099	10
3	.939170	15	3	.941163	15	3	.943148	15
4	.939220	20	4	.941213	20	4	.943198	20
5	.939270	25	5	.941263	25	5	.943247	25
6	.939319	30	6	.941313	30	6	.943297	30
7	.939369	35	7	.941362	35	7	.943346	35
8	.939419	40	8	.941412	40	8	.943396	40
9	.939469	45	9	.941462	45	9	.943445	45
8700	.939519	00	8740	.941511	00	8780	.943494	00
1	.939569	05	1	.941561	05	1	.943544	05
2	.939619	10	2	.941611	10	2	.943593	10
3	.939669	15	3	.941660	15	3	.943643	15
4	.939719	20	4	.941710	20	4	.943692	20
5	.939769	25	5	.941760	25	5	.943742	25
6	.939819	30	6	.941809	30	6	.943791	30
7	.939868	35	7	.941859	35	7	.943841	35
8	.939918	40	8	.941909	40	8	.943890	40
9	.939968	45	9	.941958	45	9	.943939	45
8710	.940018	00	8750	.942008	00	8790	.943989	00
1	.940068	05	1	.942058	05	1	.944038	05
2	.940118	10	2	.942107	10	2	.944088	10
3	.940168	15	3	.942157	15	3	.944137	15
4	.940218	20	4	.942206	20	4	.944186	20
5	.940267	25	5	.942256	25	5	.944236	25
6	.940317	30	6	.942306	30	6	.944285	30
7	.940367	35	7	.942355	35	7	.944335	35
8	.940417	40	8	.942405	40	8	.944384	40
9	.940467	45	9	.942454	45	9	.944433	45



真數	對數	差	真數	對數	差	真數	對數	差 72
No.	Log.	part.	No.	Log.	part.	No.	Log.	part.
8800	.944483	00	8840	.946452	00	8880	.948413	00
1	.944532	05	1	.946501	05	1	.948462	05
2	.944581	10	2	.946550	10	2	.948511	10
3	.944631	15	3	.946600	15	3	.948560	15
4	.944680	20	4	.946649	20	4	.948608	20
5	.944729	25	5	.946698	25	5	.948657	25
6	.944779	30	6	.946747	29	6	.948706	29
7	.944828	35	7	.946796	34	7	.948755	34
8	.944877	40	8	.946845	39	8	.948804	39
9	.944927	45	9	.946894	44	9	.948853	44
8810	.944976	00	8850	.946943	00	8890	.948902	00
1	.945025	05	1	.946992	05	1	.948951	05
2	.945074	10	2	.947041	10	2	.948999	10
3	.945124	15	3	.947090	15	3	.949048	15
4	.945173	20	4	.947139	20	4	.949097	20
5	.945222	25	5	.947189	25	5	.949146	25
6	.945272	30	6	.947238	29	6	.949195	29
7	.945321	35	7	.947287	34	7	.949244	34
8	.945370	40	8	.947336	39	8	.949292	39
9	.945419	45	9	.947385	44	9	.949341	44
8820	.945469	00	8860	.947434	00	8900	.949390	00
1	.945518	05	1	.947483	05	1	.949439	05
2	.945567	10	2	.947532	10	2	.949488	10
3	.945616	15	3	.947581	15	3	.949536	15
4	.945665	20	4	.947630	20	4	.949585	20
5	.945715	25	5	.947679	25	5	.949634	25
6	.945764	29	6	.947728	29	6	.949683	29
7	.945813	34	7	.947777	34	7	.949731	34
8	.945862	39	8	.947826	39	8	.949780	39
9	.945911	44	9	.947875	44	9	.949829	44
8830	.945961	00	8870	.947924	00	8910	.949878	00
1	.946010	05	1	.947973	05	1	.949926	05
2	.946059	10	2	.948021	10	2	.949975	10
3	.946108	15	3	.948070	15	3	.950024	15
4	.946157	20	4	.948119	20	4	.950073	20
5	.946207	25	5	.948168	25	5	.950121	25
6	.946256	29	6	.948217	29	6	.950170	29
7	.946305	34	7	.948266	34	7	.950219	34
8	.946354	39	8	.948315	39	8	.950267	39
9	.946403	44	9	.948364	44	9	.950316	44

真數	對數	差	真數	對數	差	真數	對數	差 73
No.	Log.	part.	No.	Log.	part.	No.	Log.	part.
8920	.950365	00	8960	.952308	00	9000	.954242	00
1	.950413	05	1	.952356	05	1	.954291	05
2	.950462	10	2	.952405	10	2	.954339	10
3	.950511	15	3	.952453	15	3	.954387	14
4	.950560	19	4	.952502	19	4	.954435	19
5	.950608	24	5	.952550	24	5	.954484	24
6	.950657	29	6	.952599	29	6	.954532	29
7	.950705	34	7	.952647	34	7	.954580	34
8	.950754	39	8	.952696	39	8	.954628	38
9	.950803	44	9	.952744	44	9	.954677	43
8930	.950851	00	8970	.952792	00	9010	.954725	00
1	.950900	05	1	.952841	05	1	.954773	05
2	.950949	10	2	.952889	10	2	.954821	10
3	.950997	15	3	.952938	15	3	.954869	14
4	.951046	19	4	.952986	19	4	.954918	19
5	.951095	24	5	.953034	24	5	.954966	24
6	.951143	29	6	.953083	29	6	.955014	29
7	.951192	34	7	.953131	34	7	.955062	34
8	.951240	39	8	.953180	39	8	.955110	38
9	.951289	44	9	.953228	44	9	.955158	43
8940	.951337	00	8980	.953276	00	9020	.955206	00
1	.951386	05	1	.953325	05	1	.955255	05
2	.951435	10	2	.953373	10	2	.955303	10
3	.951483	15	3	.953421	15	3	.955351	14
4	.951532	19	4	.953470	19	4	.955399	19
5	.951580	24	5	.953518	24	5	.955447	24
6	.951629	29	6	.953566	29	6	.955495	29
7	.951677	34	7	.953615	34	7	.955543	34
8	.951726	39	8	.953663	39	8	.955592	38
9	.951774	44	9	.953711	44	9	.955640	43
8950	.951823	00	8990	.953760	00	9030	.955688	00
1	.951872	05	1	.953808	05	1	.955736	05
2	.951920	10	2	.953856	10	2	.955784	10
3	.951969	15	3	.953905	15	3	.955832	14
4	.952017	19	4	.953953	19	4	.955880	19
5	.952066	24	5	.954001	24	5	.955928	24
6	.952114	29	6	.954049	29	6	.955976	29
7	.952163	34	7	.954098	34	7	.956024	34
8	.952211	39	8	.954146	39	8	.956072	38
9	.952259	44	9	.954194	44	9	.956120	43



眞數	對數	差	眞數	對數	差	眞數	對數	差 74
No.	Log.	part.	No.	Log.	part.	No.	Log.	part.
9040	.956168	00	9080	.958086	00	9120	.959995	00
1	.956216	05	1	.958134	05	1	.960042	05
2	.956264	10	2	.958181	10	2	.960090	10
3	.956312	14	3	.958229	14	3	.960138	14
4	.956361	19	4	.958277	19	4	.960185	19
5	.956409	24	5	.958325	24	5	.960233	24
6	.956457	29	6	.958373	29	6	.960280	28
7	.956505	34	7	.958420	34	7	.960328	33
8	.956553	38	8	.958468	38	8	.960376	38
9	.956601	43	9	.958516	43	9	.960423	43
9050	.956649	00	9090	.958564	00	9130	.960471	00
1	.956697	05	1	.958612	05	1	.960518	05
2	.956744	10	2	.958659	10	2	.960566	10
3	.956792	14	3	.958707	14	3	.960613	14
4	.956840	19	4	.958755	19	4	.960661	19
5	.956888	24	5	.958803	24	5	.960709	24
6	.956936	29	6	.958850	29	6	.960756	28
7	.956984	34	7	.958898	34	7	.960804	33
8	.957032	38	8	.958946	38	8	.960851	38
9	.957080	43	9	.958994	43	9	.960899	43
9060	.957128	00	9100	.959041	00	9140	.960946	00
1	.957176	05	1	.959089	05	1	.960994	05
2	.957224	10	2	.959137	10	2	.961041	10
3	.957272	14	3	.959184	14	3	.961089	14
4	.957320	19	4	.959232	19	4	.961136	19
5	.957368	24	5	.959280	24	5	.961184	24
6	.957416	29	6	.959328	29	6	.961231	28
7	.957464	34	7	.959375	34	7	.961279	33
8	.957511	38	8	.959423	38	8	.961326	38
9	.957559	43	9	.959471	43	9	.961374	43
9070	.957607	00	9110	.959518	00	9150	.961421	00
1	.957655	05	1	.959566	05	1	.961469	05
2	.957703	10	2	.959614	10	2	.961516	10
3	.957751	14	3	.959661	14	3	.961563	14
4	.957799	19	4	.959709	19	4	.961611	19
5	.957847	24	5	.959757	24	5	.961658	24
6	.957894	29	6	.959804	29	6	.961706	28
7	.957942	34	7	.959852	34	7	.961753	33
8	.957990	38	8	.959900	38	8	.961801	38
9	.958038	43	9	.959947	43	9	.961848	43

眞數	對數	差	眞數	對數	差	眞數	對數	差 75
No.	Log.	part.	No.	Log.	part.	No.	Log.	part.
9160	.961895	00	9200	.963788	00	9240	.965672	00
1	.961943	05	1	.963835	05	1	.965719	05
2	.961990	10	2	.963882	09	2	.965766	09
3	.962038	14	3	.963929	14	3	.965813	14
4	.962085	19	4	.963977	19	4	.965860	19
5	.962132	24	5	.964024	24	5	.965907	24
6	.962180	28	6	.964071	28	6	.965954	28
7	.962227	33	7	.964118	33	7	.966001	33
8	.962275	38	8	.964165	38	8	.966048	38
9	.962322	43	9	.964212	42	9	.966095	42
9170	.962369	00	9210	.964260	00	9250	.966142	00
1	.962417	05	1	.964307	05	1	.966189	05
2	.962464	09	2	.964354	09	2	.966236	09
3	.962511	14	3	.964401	14	3	.966283	14
4	.962559	19	4	.964448	19	4	.966329	19
5	.962606	24	5	.964495	24	5	.966376	24
6	.962653	28	6	.964542	28	6	.966423	28
7	.962701	33	7	.964590	33	7	.966470	33
8	.962748	38	8	.964637	38	8	.966517	38
9	.962795	42	9	.964684	42	9	.966564	42
9180	.962843	00	9220	.964731	00	9260	.966611	00
1	.962890	05	1	.964778	05	1	.966658	05
2	.962937	09	2	.964825	09	2	.966705	09
3	.962985	14	3	.964872	14	3	.966752	14
4	.963032	19	4	.964919	19	4	.966798	19
5	.963079	24	5	.964966	24	5	.966845	24
6	.963126	28	6	.965013	28	6	.966892	28
7	.963174	33	7	.965060	33	7	.966939	33
8	.963221	38	8	.965108	38	8	.966986	38
9	.963268	42	9	.965155	42	9	.967033	42
9190	.963315	00	9230	.965202	00	9270	.967080	00
1	.963363	05	1	.965249	05	1	.967127	05
2	.963410	09	2	.965296	09	2	.967173	09
3	.963457	14	3	.965343	14	3	.967220	14
4	.963504	19	4	.965390	19	4	.967267	19
5	.963552	24	5	.965437	24	5	.967314	24
6	.963599	28	6	.965484	28	6	.967361	28
7	.963646	33	7	.965531	33	7	.967408	33
8	.963693	38	8	.965578	38	8	.967454	38
9	.963741	42	9	.965625	42	9	.967501	42



眞數	對數	差	眞數	對數	差	眞數	對數	差 76
No.	Log.	part.	No.	Log.	part.	No.	Log.	part.
9280	.967548	00	9320	.969416	00	9360	.971276	00
1	.967595	05	1	.969462	05	1	.971322	05
2	.967642	09	2	.969509	09	2	.971369	09
3	.967688	14	3	.969556	14	3	.971415	14
4	.967735	19	4	.969602	19	4	.971461	19
5	.967782	23	5	.969649	23	5	.971508	23
6	.967829	28	6	.969695	28	6	.971554	28
7	.967875	33	7	.969742	33	7	.971600	33
8	.967922	38	8	.969788	37	8	.971647	37
9	.967969	42	9	.969835	42	9	.971693	42
9290	.968016	00	9330	.969882	00	9370	.971740	00
1	.968062	05	1	.969928	05	1	.971786	05
2	.968109	09	2	.969975	09	2	.971832	09
3	.968156	14	3	.970021	14	3	.971879	14
4	.968203	19	4	.970068	19	4	.971925	19
5	.968249	23	5	.970114	23	5	.971971	23
6	.968296	28	6	.970161	28	6	.972018	28
7	.968343	33	7	.970207	33	7	.972064	33
8	.968389	38	8	.970254	37	8	.972110	37
9	.968436	42	9	.970300	42	9	.972156	42
9300	.968483	00	9340	.970347	00	9380	.972203	00
1	.968530	05	1	.970393	05	1	.972249	05
2	.968576	09	2	.970440	09	2	.972295	09
3	.968623	14	3	.970486	14	3	.972342	14
4	.968670	19	4	.970533	19	4	.972388	18
5	.968716	23	5	.970579	23	5	.972434	23
6	.968763	28	6	.970626	28	6	.972480	28
7	.968810	33	7	.970672	33	7	.972527	32
8	.968856	37	8	.970719	37	8	.972573	37
9	.968903	42	9	.970765	42	9	.972619	41
9310	.968950	00	9350	.970812	00	9390	.972666	00
1	.968996	05	1	.970858	05	1	.972712	05
2	.969043	09	2	.970904	09	2	.972758	09
3	.969090	14	3	.970951	14	3	.972804	14
4	.969136	19	4	.970997	19	4	.972851	18
5	.969183	23	5	.971044	23	5	.972897	23
6	.969229	28	6	.971090	28	6	.972943	28
7	.969276	33	7	.971137	33	7	.972989	32
8	.969323	37	8	.971183	37	8	.973035	37
9	.969369	42	9	.971229	42	9	.973082	41

眞數	對數	差	眞數	對數	差	眞數	對數	差 77
No.	Log.	part.	No.	Log.	part.	No.	Log.	part.
9400	.973128	00	9440	.974972	00	9480	.976808	00
1	.973174	05	1	.975018	05	1	.976854	05
2	.973220	09	2	.975064	09	2	.976900	09
3	.973266	14	3	.975110	14	3	.976946	14
4	.973313	18	4	.975156	18	4	.976991	18
5	.973359	23	5	.975202	23	5	.977037	23
6	.973405	28	6	.975248	28	6	.977083	27
7	.973451	32	7	.975294	32	7	.977129	32
8	.973497	37	8	.975340	37	8	.977175	37
9	.973543	41	9	.975386	41	9	.977220	41
9410	.973590	00	9450	.975432	00	9490	.977266	00
1	.973636	05	1	.975478	05	1	.977312	05
2	.973682	09	2	.975524	09	2	.977358	09
3	.973728	14	3	.975570	14	3	.977403	14
4	.973774	18	4	.975616	18	4	.977449	18
5	.973820	23	5	.975661	23	5	.977495	23
6	.973866	28	6	.975707	28	6	.977541	27
7	.973913	32	7	.975753	32	7	.977586	32
8	.973959	37	8	.975799	37	8	.977632	37
9	.974005	41	9	.975845	41	9	.977678	41
9420	.974051	00	9460	.975891	00	9500	.977724	00
1	.974097	05	1	.975937	05	1	.977769	05
2	.974143	09	2	.975983	09	2	.977815	09
3	.974189	14	3	.976029	14	3	.977861	14
4	.974235	18	4	.976075	18	4	.977906	18
5	.974281	23	5	.976121	23	5	.977952	23
6	.974327	28	6	.976166	28	6	.977998	27
7	.974373	32	7	.976212	32	7	.978043	32
8	.974420	37	8	.976258	37	8	.978089	37
9	.974466	41	9	.976304	41	9	.978135	41
9430	.974512	00	9470	.976350	00	9510	.978180	00
1	.974558	05	1	.976396	05	1	.978226	05
2	.974604	09	2	.976442	09	2	.978272	09
3	.974650	14	3	.976487	14	3	.978317	14
4	.974696	18	4	.976533	18	4	.978363	18
5	.974742	23	5	.976579	23	5	.978409	23
6	.974788	28	6	.976625	28	6	.978454	27
7	.974834	32	7	.976671	32	7	.978500	32
8	.974880	37	8	.976717	37	8	.978546	37
9	.974926	41	9	.976762	41	9	.978591	41



眞數	對數	差	眞數	對數	差	眞數	對數	差 78
No.	Log.	part.	No.	Log.	part.	No.	Log.	part.
9520	.978637	00	9560	.980458	00	9600	.982271	00
1	.978683	05	1	.980503	05	1	.982316	05
2	.978728	09	2	.980549	09	2	.982362	09
3	.978774	14	3	.980594	14	3	.982407	14
4	.978819	18	4	.980640	18	4	.982452	18
5	.978865	23	5	.980685	23	5	.982497	23
6	.978911	27	6	.980730	27	6	.982543	27
7	.978956	32	7	.980776	32	7	.982588	32
8	.979002	36	8	.980821	36	8	.982633	36
9	.979047	41	9	.980867	41	9	.982678	41
9530	.979093	00	9570	.980912	00	9610	.982723	00
1	.979138	05	1	.980957	05	1	.982769	05
2	.979184	09	2	.981003	09	2	.982814	09
3	.979230	14	3	.981048	14	3	.982859	14
4	.979275	18	4	.981093	18	4	.982904	18
5	.979321	23	5	.981139	23	5	.982949	23
6	.979366	27	6	.981184	27	6	.982994	27
7	.979412	32	7	.981229	32	7	.983040	32
8	.979457	36	8	.981275	36	8	.983085	36
9	.979503	41	9	.981320	41	9	.983130	41
9540	.979548	00	9580	.981365	00	9620	.983175	00
1	.979594	05	1	.981411	05	1	.983220	05
2	.979639	09	2	.981456	09	2	.983265	09
3	.979685	14	3	.981501	14	3	.983310	14
4	.979730	18	4	.981547	18	4	.983356	18
5	.979776	23	5	.981592	23	5	.983401	23
6	.979821	27	6	.981637	27	6	.983446	27
7	.979867	32	7	.981683	32	7	.983491	32
8	.979912	36	8	.981728	36	8	.983536	36
9	.979958	41	9	.981773	41	9	.983581	41
9550	.980003	00	9590	.981819	00	9630	.983626	00
1	.980049	05	1	.981864	05	1	.983671	05
2	.980094	09	2	.981909	09	2	.983716	09
3	.980140	14	3	.981954	14	3	.983762	14
4	.980185	18	4	.982000	18	4	.983807	18
5	.980231	23	5	.982045	23	5	.983852	23
6	.980276	27	6	.982090	27	6	.983897	27
7	.980322	32	7	.982135	32	7	.983942	32
8	.980367	36	8	.982181	36	8	.983987	36
9	.980412	41	9	.982226	41	9	.984032	41

眞數	對數	差	眞數	對數	差	眞數	對數	差 79
No.	Log.	part.	No.	Log.	part.	No.	Log.	part.
9640	.984077	00	9680	.985875	00	9720	.987666	00
1	.984122	05	1	.985920	04	1	.987711	04
2	.984167	09	2	.985965	09	2	.987756	09
3	.984212	14	3	.986010	13	3	.987800	13
4	.984257	18	4	.986055	18	4	.987845	18
5	.984302	23	5	.986100	22	5	.987890	22
6	.984347	27	6	.986144	27	6	.987934	27
7	.984392	32	7	.986189	31	7	.987979	31
8	.984437	36	8	.986234	36	8	.988024	36
9	.984482	41	9	.986279	40	9	.988068	40
9650	.984527	00	9690	.986324	00	9730	.988113	00
1	.984572	05	1	.986369	04	1	.988157	04
2	.984617	09	2	.986413	09	2	.988202	09
3	.984662	14	3	.986458	13	3	.988247	13
4	.984707	18	4	.986503	18	4	.988291	18
5	.984752	23	5	.986548	22	5	.988336	22
6	.984797	27	6	.986593	27	6	.988381	27
7	.984842	32	7	.986637	31	7	.988425	31
8	.984887	36	8	.986682	36	8	.988470	36
9	.984932	41	9	.986727	40	9	.988514	40
9660	.984977	00	9700	.986772	00	9740	.988559	00
1	.985022	05	1	.986816	04	1	.988603	04
2	.985067	09	2	.986861	09	2	.988648	09
3	.985112	14	3	.986906	13	3	.988693	13
4	.985157	18	4	.986951	18	4	.988737	18
5	.985202	23	5	.986995	22	5	.988782	22
6	.985247	27	6	.987040	27	6	.988826	27
7	.985292	32	7	.987085	31	7	.988871	31
8	.985337	36	8	.987130	36	8	.988915	36
9	.985382	41	9	.987174	40	9	.988960	40
9670	.985426	00	9710	.987219	00	9750	.989005	00
1	.985471	04	1	.987264	04	1	.989049	04
2	.985516	09	2	.987309	09	2	.989094	09
3	.985561	13	3	.987353	13	3	.989138	13
4	.985606	18	4	.987398	18	4	.989183	18
5	.985651	22	5	.987443	22	5	.989227	22
6	.985696	27	6	.987487	27	6	.989272	27
7	.985741	31	7	.987532	31	7	.989316	31
8	.985786	36	8	.987577	36	8	.989361	36
9	.985830	40	9	.987622	40	9	.989405	40



眞數	對數	差	眞數	對數	差	眞數	對數	差 80
No.	Log.	part.	No.	Log.	part.	No.	Log.	part.
9760	.989450	00	9800	.991226	00	9840	.992995	00
1	.989494	04	1	.991270	04	1	.993039	04
2	.989539	09	2	.991315	09	2	.993083	09
3	.989583	13	3	.991359	13	3	.993127	13
4	.989628	18	4	.991403	18	4	.993172	18
5	.989672	22	5	.991448	22	5	.993216	22
6	.989717	27	6	.991492	27	6	.993260	26
7	.989761	31	7	.991536	31	7	.993304	31
8	.989806	36	8	.991580	36	8	.993348	35
9	.989850	40	9	.991625	40	9	.993392	40
9770	.989895	00	9810	.991669	00	9850	.993436	00
1	.989939	04	1	.991713	04	1	.993480	04
2	.989983	09	2	.991757	09	2	.993524	09
3	.990028	13	3	.991802	13	3	.993568	13
4	.990072	18	4	.991846	18	4	.993613	18
5	.990117	22	5	.991890	22	5	.993657	22
6	.990161	27	6	.991934	27	6	.993701	26
7	.990206	31	7	.991979	31	7	.993745	31
8	.990250	36	8	.992023	36	8	.993789	35
9	.990294	40	9	.992067	40	9	.993833	40
9780	.990339	00	9820	.992111	00	9860	.993877	00
1	.990383	04	1	.992156	04	1	.993921	04
2	.990428	09	2	.992200	09	2	.993965	09
3	.990472	13	3	.992244	13	3	.994009	13
4	.990516	18	4	.992288	18	4	.994053	18
5	.990561	22	5	.992333	22	5	.994097	22
6	.990605	27	6	.992377	26	6	.994141	26
7	.990650	31	7	.992421	31	7	.994185	31
8	.990694	36	8	.992465	35	8	.994229	35
9	.990738	40	9	.992509	40	9	.994273	40
9790	.990783	00	9830	.992553	00	9870	.994317	00
1	.990827	04	1	.992598	04	1	.994361	04
2	.990871	09	2	.992642	09	2	.994405	09
3	.990916	13	3	.992686	13	3	.994449	13
4	.990960	18	4	.992730	18	4	.994493	18
5	.991004	22	5	.992774	22	5	.994537	22
6	.991049	27	6	.992818	26	6	.994581	26
7	.991093	31	7	.992863	31	7	.994625	31
8	.991137	36	8	.992907	35	8	.994669	35
9	.991182	40	9	.992951	40	9	.994713	40

眞數	對數	差	眞數	對數	差	眞數	對數	差 81
No.	Log.	part.	No.	Log.	part.	No.	Log.	part.
9880	.994757	00	9920	.996512	00	9960	.998259	00
1	.994801	04	1	.996555	04	1	.998303	04
2	.994845	09	2	.996599	09	2	.998346	09
3	.994889	13	3	.996643	13	3	.998390	13
4	.994933	18	4	.996687	18	4	.998434	17
5	.994977	22	5	.996730	22	5	.998477	22
6	.995021	26	6	.996774	26	6	.998521	26
7	.995064	31	7	.996818	31	7	.998564	30
8	.995108	35	8	.996862	35	8	.998608	35
9	.995152	40	9	.996905	40	9	.998652	39
9890	.995196	00	9930	.996949	00	9970	.998695	00
1	.995240	04	1	.996993	04	1	.998739	04
2	.995284	09	2	.997037	09	2	.998782	09
3	.995328	13	3	.997080	13	3	.998826	13
4	.995372	18	4	.997124	18	4	.998869	17
5	.995416	22	5	.997168	22	5	.998913	22
6	.995460	26	6	.997212	26	6	.998956	26
7	.995504	31	7	.997255	31	7	.999000	30
8	.995547	35	8	.997299	35	8	.999043	35
9	.995591	40	9	.997343	39	9	.999087	39
9900	.995635	00	9940	.997386	00	9980	.999130	00
1	.995679	04	1	.997430	04	1	.999174	04
2	.995723	09	2	.997474	09	2	.999218	09
3	.995767	13	3	.997517	13	3	.999261	13
4	.995811	18	4	.997561	17	4	.999305	17
5	.995854	22	5	.997605	22	5	.999348	22
6	.995898	26	6	.997648	26	6	.999392	26
7	.995942	31	7	.997692	30	7	.999435	30
8	.995986	35	8	.997736	35	8	.999478	35
9	.996030	40	9	.997779	39	9	.999522	39
9910	.996074	00	9950	.997823	00	9990	.999565	00
1	.996117	04	1	.997867	04	1	.999609	04
2	.996161	09	2	.997910	09	2	.999652	09
3	.996205	13	3	.997954	13	3	.999696	13
4	.996249	18	4	.997998	17	4	.999739	17
5	.996293	22	5	.998041	22	5	.999783	22
6	.996336	26	6	.998085	26	6	.999826	26
7	.996380	31	7	.998128	30	7	.999870	30
8	.996424	35	8	.998172	35	8	.999913	35
9	.996468	40	9	.998216	39	9	.999957	39



(u.2) Table for converting Minutes and Seconds into Seconds.

表 分 秒 化 秒 及 秒 除 秒

m or'	0'	1'	2'	3'	4'	5'	6'	7'	8'	9'
0	0	60	120	180	240	300	360	420	480	540
10	600	660	720	780	840	900	960	1020	1080	1140
20	1200	1260	1320	1380	1440	1500	1560	1620	1680	1740
30	1800	1860	1920	1980	2040	2100	2160	2220	2280	2340
40	2400	2460	2520	2580	2640	2700	2760	2820	2880	2940
50	3000	3060	3120	3180	3240	3300	3360	3420	3480	3540

 $1^\circ \text{ or } 1^h = 3600''$  $3^\circ \text{ or } 3^h = 10800''$  $5^\circ \text{ or } 5^h = 18000''$  $2^\circ \text{ or } 2^h = 7200''$  $4^\circ \text{ or } 4^h = 14400''$  $6^\circ \text{ or } 6^h = 21600''$



